

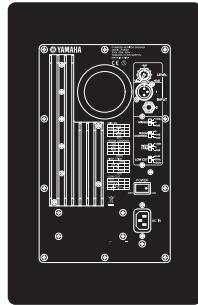
# HS Series

## Powered Near-field Monitors

### HS80M



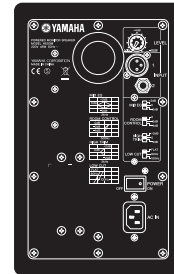
HS80M Rear Panel



### HS50M



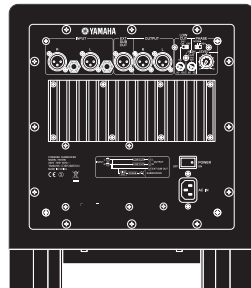
HS50M Rear Panel



### HS10W



HS10W Rear Panel



*If Your Mixes Sound Good On These, They'll Sound Good Anywhere*

#### HS80M

- 2-way bass-reflex bi-amplified near-field studio monitor with 8" cone woofer and 1" dome high-frequency unit delivers 42 Hz – 20 kHz frequency response.
- 120 watts dynamic bi-amplified power.
- XLR and TRS phone jack inputs accept balanced or unbalanced signals.
- Large Magnets in an Advanced Magnetic Circuit Design
- Level control facilitates precise overall system level matching.
- MID EQ, ROOM CONTROL, and HIGH TRIM response control switches.
- LOW CUT switch.
- Full magnetic shielding.

#### HS50M

- 2-way bass-reflex bi-amplified near-field studio monitor with 5" cone woofer and 3/4" dome high-frequency unit delivers 55 Hz – 20 kHz frequency response.
- 70 watts dynamic bi-amplified power.
- XLR and TRS phone jack inputs accept balanced or unbalanced signals.
- Large Magnets in an Advanced Magnetic Circuit Design
- Level control facilitates precise overall system level matching.
- MID EQ, ROOM CONTROL, and HIGH TRIM response control switches.
- LOW CUT switch.
- Full magnetic shielding.

#### HS10W

- 8" bass-reflex powered subwoofer delivers solid 30 Hz – 120 Hz frequency response.
- 150 watts dynamic power.
- XLR and TRS phone jack inputs accept balanced or unbalanced signals.
- Balanced XLR L and R outputs connect to the main left and right speakers. L/R mix output connects to a second subwoofer if required.
- Level control facilitates precise overall system level matching.
- Phase switch simplifies phase alignment.
- Low-pass filter control and high-pass filter control with ON/OFF switch.
- Full magnetic shielding.

# HS Series

## GENERAL SPECIFICATIONS

Model	HS80M	HS50M	HS10W
Type	Bi-amp 2-way powered speaker	Bi-amp 2-way powered speaker	Powered subwoofer
Crossover frequency	2kHz	3kHz	-
Frequency response (-10dB)	42Hz-20kHz	55Hz-20kHz	30Hz-180Hz
Dimensions (W x H x D)	250 x 390 x 332mm (9.8" x 15.4" x 13.1")	165 x 268 x 222mm (6.5" x 10.6" x 8.7")	300 x 350 x 386mm (11.8" x 13.8" x 15.2")
Weight	11.3kg (24.9lbs)	5.8kg (12.8lbs)	12.5kg (27.6lbs)

## SPEAKER SECTION

Model	HS80M	HS50M	HS10W
Component	LF	8" cone	8" cone
	HF	1" dome	
Enclosure	Type	Bass-reflex type	Bass-reflex type
	Material	MDF	MDF

## AMPLIFIER SECTION

Model	HS80M	HS50M	HS10W
Output	Total	120W (Dynamic power)	70W (Dynamic power)
	LF	75W (4Ω)	45W (4Ω)
	HF	45W (8Ω)	25W (8Ω)
Input sensitivity, Impedance		+4dBu, LEVEL = Center -10dBu, LEVEL = Max	
Output sensitivity, Impedance			-10dBu/600Ω
Input terminal (Parallel)		1:XLR3-31 (Balance) 2:PHONE (Balance)	
Output terminal			1:XLR3-32 (Balance)x1 (EXT SUB) 1:XLR3-32 (Balance)x2 (L&R)
Control switch		LEVEL (+4dB/center click) LOW CUT switch (FLAT/80/100Hz, 12dB/octave) EQ: MID(+/-2dB at 2kHz), EQ: HIGH(+/-2dB at HF) ROOM CONTROL (0/-2/-4dB: Under 500Hz)	LEVEL LOW CUT switch, control: 80-120Hz HIGH CUT control: 80-120Hz PHASE switch: NORM./REV.
Indicator		POWER ON: White LED	
Power consumption	60W	45W	70W

## DIMENSIONS

