

FIBERFOX

The World Of Professional Fiber Optics

- ▶ safe
- ▶ flexible
- ▶ reliable





Contents

General Info.....	3
2-Channel System.....	6
4-Channel System.....	10
SMPTE System.....	15
Patchcords.....	19
Accessories.....	21
Techzone.....	24

FIBERFOX

THE SYSTEM

Description

Large amounts of data can be transmitted outstandingly with fibre-optic systems. Any weaknesses in relation to cables or connectors will be completely eliminated by using the FIBERFOX system. Durability, reliability and easy handling are priorities because the material must withstand the highest demands that are placed on it by rigging and de-rigging during mobile use.

FIBERFOX EBC lens connectors always ensure the system's functionality, even in harsh environmental conditions like rain, cold, heat, dust or mud. In contrast to conventional fiber optic systems they achieve much more mating cycles (> 5000 without change (!) of insertion loss). They do not wear out at all, they are maintenance-free and have a theoretically unlimited lifetime. FIBERFOX EBC connectors comply with IP68 (connected or disconnected) and can be cleaned easily and quickly by using clear water and a lint-free cloth only. Detailed measurements are not necessary!

FIBERFOX is a lens connector system that provides excellent results for singlemode as well and therefore works without any problems in this kind of signal transmission. Our connectors are MIL-DTL-83526 compliant, so they are following the world wide standard for expanded beam connectors.

As manufacturer of FIBERFOX we also are able to offer and to produce customized solutions even for small quantities within a short time. If products you're looking for are missing in this catalogue don't hesitate to ask us! We offer state-of-the-art manufacturing and assembling methods as well as qualified expert staff. All this and comprehensive warehousing enables the production of standardized or customized products at simultaneously flexible manufacturing within short lead times. Everything is coordinated perfectly!

FIBERFOX serves not pre-assembled cables only, but a wide range of products and accessories such as 19" solutions, modular systems, media converters and more. In combination with CONNEX video extenders this leads to efficient complex systems coming from a single source.

Broadcast and event companies have confidence in FIBERFOX systems for the transmission of audio, video and lighting signals for years. Just ask for references! We can provide you with a list of well-known worldwide events ranging from the Olympic Games to famous artists, big concerts, unique installations, broadcast companies and many more!

▶ GENERAL INFO



The Linking Elements

The problems that were involved with conventional connections in the past no longer apply when using prefabricated FIBERFOX glass fibre lines. Cables and the associated EBC lens connectors are optimally coordinated with each other on all lines and they therefore supply the best technical

values. Selected types of drum – which also offer special features for reliable use with optical transmission systems, besides the correct core diameter and the best holding capacity – ensure easy handling use.

EBC Cables

The flame-retardant halogen-free FOXPUR cable is extremely loadable mechanically, highly flexible and it can be wound on the drum very well. Its attenuating values are very low and so is its weight. Contracted stickers bearing serial numbers and longitudinal lettering enable permanent traceability and simple stock-taking. Every cable is inspected with the most modern measuring equipment before it leaves our firm. Since the connectors are hermaphroditic, no adapters are needed for the extension of cables. Just put them together!

Cable Drums

We use rubber drums for lines of up to 400 m (SMPT 100 m), on account of their high resistance and low weight. All drums allow for the cable's appropriate bending radius. Special holding facilities ensure that the ends of lines will be fixed and that they are not subjected to any wear during transport. Cable made of steel are used for distances of more than 400 m.



The Connecting Elements

FIBERFOX offers a wide range of possibilities in this case. The user can choose a practical system ranging from the simple connection panel to the highly flexible modular construction. Whereas the 19" connection panel mainly supports the conventional use of racks, the FCM components offer varied options: stand-alone operation, rack assembly, outlet box, etc. Almost everything can be done! Short-term demands are fulfilled – at the least cost – by means of exchanging the modules:

this guarantees a high level of redundancy and it avoids tedious assembly work. All of the common systems can be linked up via the connection of suitable cables, starting from the SC duplex connector. Last but not least: FIBERFOX has already become the standard in many OB vans, studios and live situations.

FCM Modules

Compact metal boxes with lens connectors on the front and various facilities for connection on the back. They are available in passive or active versions such as Standard Modules, SMPT Modules and Ethernet Modules.

FCM Module Connection Cables

They make the connection to your system and are coordinated to the FCM modules.

FCM Frames/Housings

Available as 19" version. They can carry up to four (1U) or nine (3U) FCM modules. FIBERFOX frames are perfect for Rental, OB-Vans and Fixed Installation as well.

EBC 19" Connection Panels

If no FCM modules are needed and it is not required to change the EBC integrated connectors frequently, then EBC connection panels are the best choice.

EBC Receptacles

One size fits all! Standard FIBERFOX receptacles are coming with Neutrik XLR D-flange (other adaptations such as Lemo, Stratos are possible as well) There is no distinction between flange mount or jam-nut style! FIBERFOX receptacles can alternatively be mounted on front or rear of a panel. Many different color coding rings are available for individual labeling. Standard length for terminated patchcord is 2m, all kind of industry-standard connectors are possible.

FCM-GMC GigaBit Media converter

Coming as universal 10/100/1000mBit converter for use in extreme environments, it offers a wide range of operating temperature as well as save and reliable connection. Real plug & play, link loss forwarding technology and many more features characterize this FIBERFOX product.



The Accessories

The trappings also belong to the aspects which are significant when purchasing a system. Quick availability plays an important role with patchcords, tools, spare parts or other material – apart from being good value for money. Although the matter concerns conventional products in many cases, we carefully ensure quality throughout, in order to guarantee sustained and excellent performance of the entire system in this area, too.

Patchcords

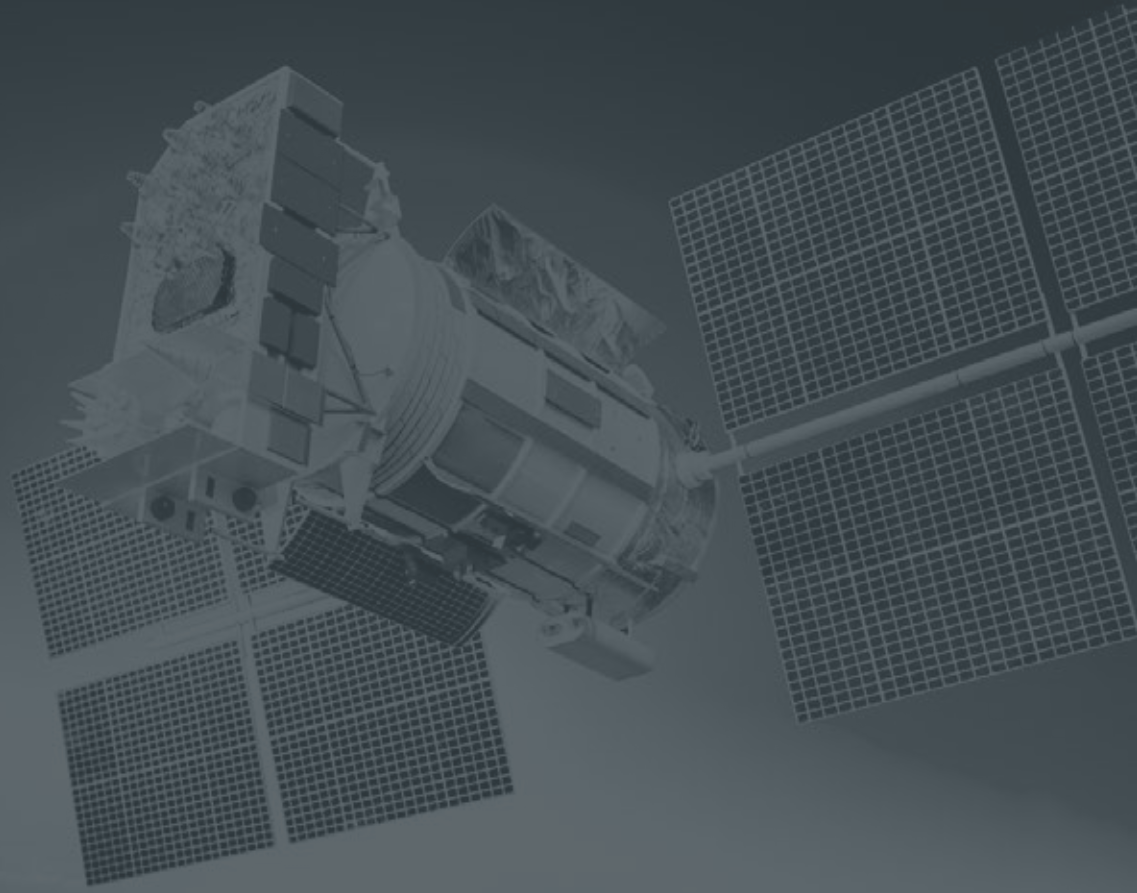
All common cables, connectors and different lengths.

Service Parts

Parts for service and repair.



▶ 2-CHANNEL SYSTEM



FIBERFOX 2-CHANNEL MULTIMODE
FIBER OPTIC MULTICORE SYSTEM

FIBERFOX EBC1502

Ready-Made Cable 2-Fibers



- ▶ $\varnothing = 5\text{mm}$, 2 fiber channels
- ▶ PUR flame-retardant, bent tolerant, halogen-free
- ▶ Ready made up with connector EBC1502
- ▶ Heavy-duty
- ▶ Low attenuation, low weight
- ▶ Also available as cable plug/receptacle version, coming with superior strain relief (same as back-end EBC cable connector)

FIBERFOX EBC1502 Ready-Made Cable 2-Fibers
1X EBC1502 plug / 1X EBC1502 plug

CODE	MULTIMODE 50/125 μm
27500745	5m
27500746	25m
27500747	50m
27500706	100m
27500748	150m
27500749	250m
27500750	500m
27500751	1000m

FIBERFOX EBC1502 Ready-Made Cable 2-Fibers
1X EBC1502 plug / 1X EBC1502 plug

CODE	MULTIMODE 62.5/125 μm
27500752	5m
27500753	25m
27500754	50m
27500755	100m
27500756	150m
27500757	250m
27500758	500m
27500759	1000m

FIBERFOX EBC1502 Ready-Made Cable 2-Fibers
1x EBC1502 plug receptacle / 1x EBC1502 plug

CODE	MULTIMODE 50/125 μm
27500760	100m
27500761	250m
27500762	400m
27500763	500m

FIBERFOX EBC1502 Ready-Made Cable 2-Fibers
1x EBC1502 plug receptacle / 1x EBC1502 plug

CODE	MULTIMODE 62.5/125 μm
27500764	100m
27500765	250m
27500766	400m
27500767	500m



FIBERFOX Cable Drum



CODE	DESCRIPTION
27198000	Cable drum max. 150m TAC
27198004	Cable drum max. 300m TAC or 100m SMPTE
27198001	Cable drum max. 400m TAC or 150m SMPTE
27198002	Cable drum max. 800m TAC or 300m SMPTE
27198003	Cable drum max. 1500m TAC or 500m SMPTE
27198008	Cable drum max. 150m TAC with cable split
27198007	Cable drum max. 250m TAC with cable split

- ▶ Versions up to 400m are made of rubber
- ▶ 500m (or more) versions are stackable and made of steel
- ▶ With fixing for connectors or strapping ring
- ▶ With brake
- ▶ Colour black

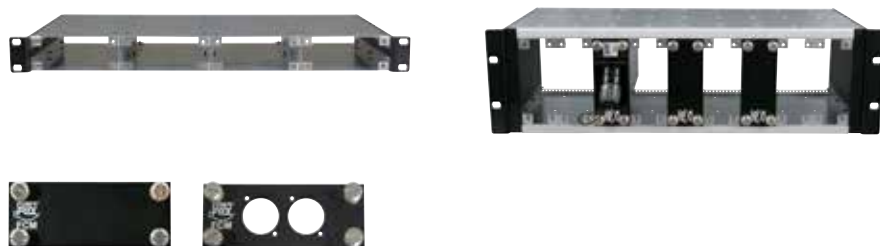
FIBERFOX FCM Standard Module



- ▶ (W) approx. 109mm · 1 module site, (H) approx. 44mm · 1 HE, (D) approx. 186mm
- ▶ Front 2mm steel plate, black powder coated, housing 1.5mm steel plate, galvanised
- ▶ Front FIBERFOX EBC1502
- ▶ Back 1x SC-Duplex, also fits 2x Simplex (e.g. SC PC)
- ▶ All connectors with safety cap, countersunk 45° on the front
- ▶ Ready made-up on the inside

CODE	DESCRIPTION
27702039	EBC1502 / 2x SC, 50/125
27702044	EBC1502 / 2x SC, 62.5/125

FIBERFOX FCM Frame/Housing



- ▶ Steel plate 1.5mm, elogalvanised, black powder coated
- ▶ All frames/housings are without FCM modules
- ▶ Frame 19": 1U, approx. 194mm (D), for a maximum of 4x FCM modules
- ▶ Frame 19": 3U, approx. 194mm (D), for a maximum of 9x FCM modules

CODE	DESCRIPTION
27702000	19", 1U for max. 4x FCM modules, blank
27702026	19", 3U for max. 9x FCM modules vertical, blank
27702001	Cover plate
27702035	Cover plate with 2 D-holes

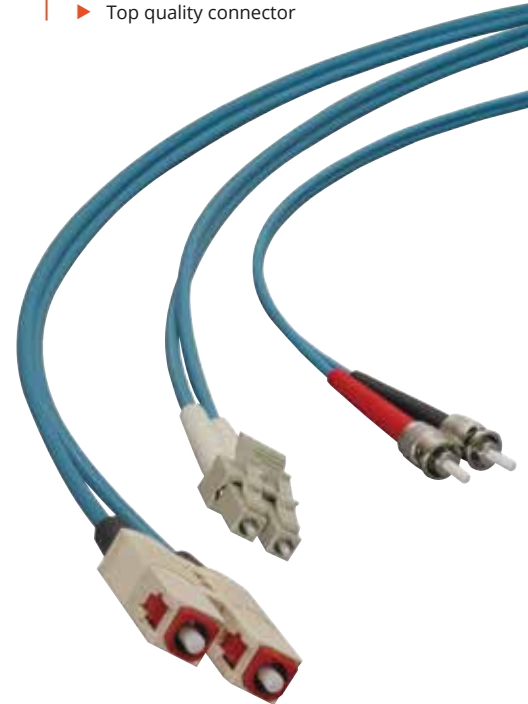
FIBERFOX FCM Module Connection Cables

CODE	FOR INTEGRATION OF THE FCM MODULES IN SC-DUPLEX SYSTEMS
27505085	SC-Duplex/SC-Duplex, 50/125, green, 2m
27505096	SC-Duplex/SC-Duplex, 62.5/125, blue, 2m

CODE	FOR INTEGRATION OF THE FCM MODULES IN LC-DUPLEX SYSTEMS
27505177	SC-Duplex/2x LC, 50/125, green, 2m
27505185	SC-Duplex/2x LC, 62.5/125, blue, 2m

CODE	FOR INTEGRATION OF THE FCM MODULES IN ST SYSTEMS
27505058	SC-Duplex/2x ST, 50/125, green, 2m
27505067	SC-Duplex/2x ST, 62.5/125, blue, 2m

- ▶ $\varnothing = 2.8\text{mm} \times 5.7\text{mm}$ - Figure 8, length see article description
- ▶ Plastic, flame-retardant, halogen-free
- ▶ Ready-made
- ▶ Colours assorted to 9/125, 50/125 and 62.5/125
- ▶ Top quality connector



FIBERFOX EBC1502 Ready-Made Receptacles for FIBERFOX



- ▶ Dimensions without cables: (W) 37mm, (H) 37mm, (D) 79mm (if cap is closed)
- ▶ See technical data EBC1502, fiber optic cable
- ▶ Two fiber channels
- ▶ Ready-made
- ▶ Incl. safety cap
- ▶ Heavy-duty

CODE	MULTIMODE 50/125 μM , DESCRIPTION
27507095	1x EBC1502 / 2x SC, 50/125, 2m
27507096	1x EBC1502 / 2x LC, 50/125, 2m
27507097	1x EBC1502 / 2x ST, 50/125, 2m

CODE	MULTIMODE 62.5/125 μM , DESCRIPTION
27507098	1x EBC1502 / 2x SC, 62.5/125, 2m
27507099	1x EBC1502 / 2x LC, 62.5/125, 2m
27507100	1x EBC1502 / 2x ST, 62.5/125, 2m

▶ 4-CHANNEL SYSTEM

FIBERFOX 4-CHANNEL MULTI- AND SINGLEMODE
FIBER OPTIC MULTICORE SYSTEM

FIBERFOX EBC1504 Ready-Made Cable 4-Fibers



- ▶ ø = 5mm, 2 fiber channels
- ▶ PUR flame-retardant, bent tolerant, halogen-free
- ▶ Ready made up with connector EBC1504
- ▶ Heavy-duty
- ▶ Low attenuation, low weight
- ▶ Also available as cable plug/receptacle version, coming with superior strain relief (same as back-end EBC cable connector)

**FIBERFOX EBC1504 READY-MADE
CABLE 4-FIBERS**

1X EBC1504 plug / 1X EBC1504 plug

CODE	MULTIMODE 50/125µm
27500710	5m
27500711	25m
27500712	50m
27500713	100m
27500714	150m
27500715	250m
27500716	500m
27500717	1000m

**FIBERFOX EBC1504 READY-MADE
CABLE 4-FIBERS**

1X EBC1504 RECEPTACLE / 1X EBC1504 plug

CODE	MULTIMODE 50/125µM
27500732	100m
27500733	250m
27500734	400m
27500735	500m



**FIBERFOX EBC1504 READY-MADE
CABLE 4-FIBERS**

1X EBC1504 plug / 1X EBC1504 plug

CODE	SINGLEMODE 9/125µm
27500725	5m
27500726	25m
27500727	50m
27500728	100m
27500729	150m
27500768	250m
27500730	500m
27500731	1000m

**FIBERFOX EBC1504 READY-MADE
CABLE 4-FIBERS**

1X EBC1504 RECEPTACLE / 1X EBC1504 plug

CODE	SINGLEMODE 9/125µm
27500740	100m
27500741	250m
27500742	400m
27500743	500m

**FIBERFOX EBC1504 READY-MADE
CABLE 4-FIBERS**

1X EBC1504 plug / 1X EBC1504 plug

CODE	MULTIMODE 62.5/125µM
27500718	5m
27500719	25m
27500720	50m
27500721	100m
27500722	150m
27500723	250m
27500724	500m
27500744	1000m

**FIBERFOX EBC1504 READY-MADE
CABLE 4-FIBERS**

1X EBC1504 RECEPTACLE / 1X EBC1504 plug

CODE	MULTIMODE 62.5/125MM
27500736	100m
27500737	250m
27500738	400m
27500739	500m



FIBERFOX Cable Drum

CODE	DESCRIPTION
27198000	Cable drum max. 150m TAC
27198004	Cable drum max. 300m TAC or 100m SMPTE
27198001	Cable drum max. 400m TAC or 150m SMPTE
27198002	Cable drum max. 800m TAC or 300m SMPTE
27198003	Cable drum max. 1500m TAC or 500m SMPTE
27198008	Cable drum max. 150m TAC with cable split
27198007	Cable drum max. 250m TAC with cable split



- ▶ Versions up to 400m are made of rubber
- ▶ 500m (or more) versions are stackable and made of steel
- ▶ With fixing for connectors or strapping ring
- ▶ With brake
- ▶ Colour black

FIBERFOX FCM Standard Module

CODE	DESCRIPTION
27702040	EBC1504 / 4x SC, 50/125
27702041	EBC1504 / 4x SC, 62.5/125
27702042	EBC1504 / 4x SC-PC, 9/125



- ▶ (W) approx. 109mm · 1 module site, (H) approx. 44mm · 1 HE, (D) approx. 194mm
- ▶ Front 2mm steel plate, black powder coated, housing 1.5mm steel plate, galvanised
- ▶ Front FIBERFOX EBC1504
- ▶ Back 2x SC-Duplex, also fits 4x Simplex (e.g. SC PC)
- ▶ All connectors with safety cap, countersunk 45° on the front
- ▶ Ready made-up on the inside

FIBERFOX FCM Frame/Housing



CODE	DESCRIPTION
27702000	19", 1U for max. 4x FCM m
27702026	19", 3U for max.9x FCM m
27702001	Cover plate
27702035	Cover plate with 2 D-holes

- ▶ Steel plate 1.5mm, elegalvanised, black powder coated
- ▶ All frames/housings are without FCM modules
- ▶ Frame 19": 1U, approx. 194mm (D), for a maximum of 4x FCM modules
- ▶ Frame 19": 3U, approx. 194mm (D), for a maximum of 9x FCM modules

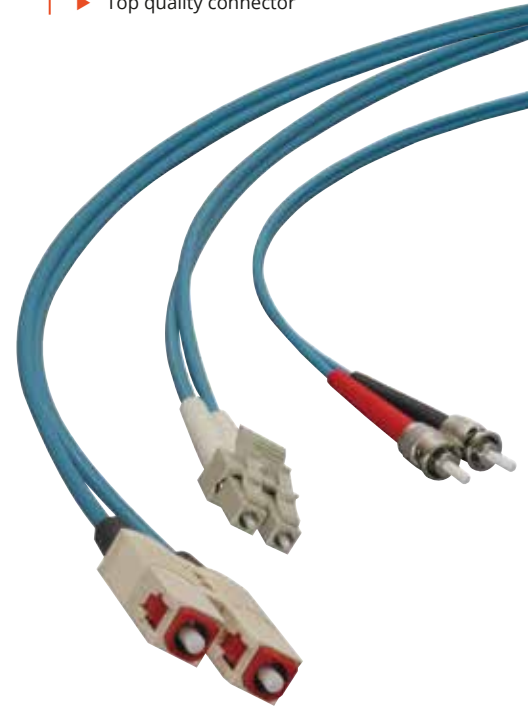
FIBERFOX FCM Module Connection Cables

CODE	FOR INTEGRATION OF THE FCM MODULES IN SC SYSTEMS
27505085	SC-Duplex/SC-Duplex, 50/125, green, 2m
27505096	SC-Duplex/SC-Duplex, 62.5/125, blue, 2m
27505326	2x SC-APC8°/2x SC-PC, 9/125, yellow, 2m
27505114	2x SC-APC8°/2x SC-APC 8°, 9/125, yellow, 2m
27505357	2x SC-APC8°/2x SC-UPC,9/125, yellow, 2m

CODE	FOR INTEGRATION OF THE FCM MODULES IN LC-DUPLEX SYSTEMS
27505177	SC-Duplex/2x LC, 50/125, green, 2m
27505185	SC-Duplex/2x LC, 62.5/125, blue, 2m
27505331	2x SC APC8°/2x LC PC, 9/125, yellow, 2m

CODE	FOR INTEGRATION OF THE FCM MODULES IN ST SYSTEMS
27505058	SC-Duplex/2x ST, 50/125, green, 2m
27505067	SC-Duplex/2x ST, 62.5/125, blue, 2m
27505327	2x SC APC8°/2x ST, 9/125, yellow, 2m

- ▶ $\varnothing = 2.8\text{mm} \times 5.7\text{mm}$ - Figure 8, length see article description
- ▶ Plastic, flame-retardant, halogen-free
- ▶ Ready-made
- ▶ Colours assorted to 9/125, 50/125 and 62.5/125
- ▶ Top quality connector



FIBERFOX EBC1504 Ready-Made Receptacles

CODE	MULTIMODE 50/125 μM , DESCRIPTION
27507086	1x EBC1504 / 4x SC, 50/125, 2m
27507087	1x EBC1504 / 4x LC, 50/125, 2m
27507088	1x EBC1504 / 4x ST, 50/125, 2m

CODE	MULTIMODE 62.5/125 μM , DESCRIPTION
27507089	1x EBC1504 / 4x SC, 62.5/125, 2m
27507090	1x EBC1504 / 4x LC, 62.5/125, 2m
27507091	1x EBC1504 / 4x ST, 62.5/125, 2m

CODE	SINGLEMODE 9/125 μM , DESCRIPTION
27507092	1x EBC1504 / 4x SC-PC, 9/125, 2m
27507093	1x EBC1504 / 4x LC-PC, 9/125, 2m
27507094	1x EBC1504 / 4x ST, 9/125, 2m

- ▶ Dimensions without cables: (W) 37mm, (H) 37mm, (D) 79mm (if cap is closed)
- ▶ See technical data EBC1504, fiber optic cable
- ▶ Four fiber channels
- ▶ Ready-made
- ▶ Incl. safety cap
- ▶ Heavy-duty



FIBERFOX FCM GigaBit media converter Module



- ▶ Equipped with Gigabit Ethernet converter
- ▶ Built in power supply 100 – 240V AC
- ▶ Readymade with EBC1504 MM or NO2, NO4
- ▶ Optical AUX for A2 or B2
- ▶ Very low latency
- ▶ LED monitoring

CODE	DESCRIPTION
27707015	GigaBit Media converter EBC1502 / 1x RJ45, 50/125
27707017	GigaBit Media converter EBC1504 / 1x RJ45/2x LC, 50/125
27707019	GigaBit Media converter 1x RJ45/2x LC, 50/125

CONNEX DVI/HDMI and 3GSDI video extender



CODE	DESCRIPTION
18270012	1x DVI In, EBC1502 A1 50/125
18270013	1x DVI Out, EBC1502 B1 50/125
18270006	2x DVI In, EBC1502 50/125
18270007	2x DVI Out, EBC1502 50/125
18270019	2x 3G/HD/SDI In+Out, EBC1502 50/125



FIBERFOX SMPTE COMPATIBLE FIBER OPTIC MULTICORE SYSTEM

The SMPTE compatible FIBERFOX System is the perfect solution for the TV industry. It shows reliability and consistency even on quickset-up temporary installations. The expanded beam connector EBC70 can provide this and connecting with an industry-standard FIBERFOX hybrid cable makes sense. The system includes ready-made cables and lots of connecting products for OBs, studios and fixed installation purposes.

FIBERFOX EBC70 Ready-Made Cables SMPTE



- ▶ $\varnothing = 9.2\text{mm}$
- ▶ 1 Cable according to SMPTE311M Standard
- ▶ PUR flame-retardant, halogen-free
- ▶ 2-fibers SM + 4x power line (AWG20)
- ▶ 2x control line (AWG24) + screen
- ▶ Heavy-duty
- ▶ Low attenuation 0,5db/km
- ▶ Low weight 120kg/km

FIBERFOX EBC70 READY-MADE CABLES SMPTE 1X EBC70 / 1X EBC70

CODE	DESCRIPTION
27504008	2m
27504000	10m
27504001	25m
27504002	50m
27504003	100m
27504005	250m
27504014	400m
27504006	500m

FIBERFOX EBC70 READY-MADE CABLES SMPTE 1X EBC70 RECEPTACLE / 1X EBC70

CODE	DESCRIPTION
27504011	100m
27504007	250m
27504012	400m
27504013	500m

FIBERFOX Cable Drum



- ▶ Versions up to 400m are made of rubber
- ▶ 500m (or more) versions are stackable and made of steel
- ▶ With fixing for connectors or strapping ring
- ▶ With brake
- ▶ Colour black



CODE	DESCRIPTION
27198000	Cable drum max. 150m TAC
27198004	Cable drum max. 300m TAC or 100m SMPTE
27198001	Cable drum max. 400m TAC or 150m SMPTE
27198002	Cable drum max. 800m TAC or 300m SMPTE
27198003	Cable drum max. 1500m TAC or 500m SMPTE
27198008	Cable drum max. 150m TAC with cable split
27198007	Cable drum max. 250m TAC with cable split

FIBERFOX FCM SMPTE Module



- ▶ (W) approx. 109mm □ 1 module site, (H) approx. 44mm □ 1 HE, (D) approx. 186mm
- ▶ Front 2mm steel plate, black powder coated, housing 1.5mm steel plate, galvanised
- ▶ Front FIBERFOX EBC70
- ▶ Back 1x SC-Duplex APC 8°, also fits 2x Simplex (e.g. APC 8°,)
- ▶ 1x PushPull 250V 2pol+E for power
- ▶ 1x PushPull 48V 4pol (Pin 1+2 connected) for control
- ▶ All fiber connectors with safety cap, countersunk 45° on the front
- ▶ Ready made-up on the inside

CODE	DESCRIPTION
27702023	EBC70 SMPTE / 2x SC-Duplex 8°, 9/125

FIBERFOX FCM Frame/Housing

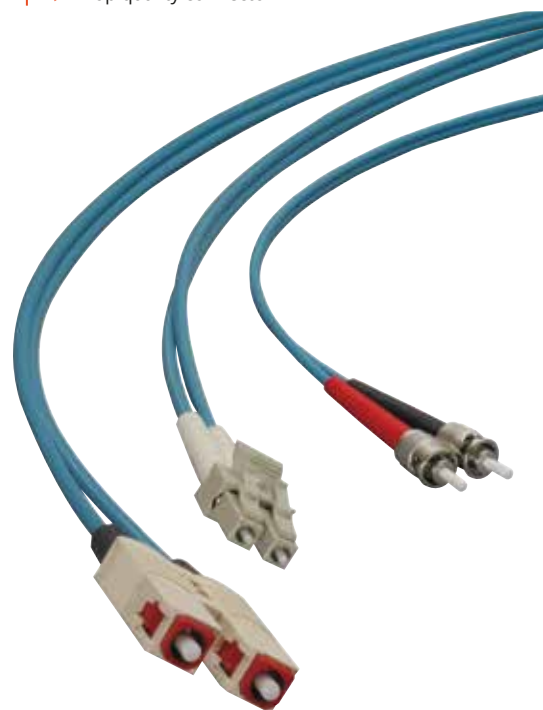


- ▶ Steel plate 1.5mm, elogalvanised, black powder coated
- ▶ All frames/housings are without FCM modules
- ▶ Frame 19": 1U, approx. 194mm (D), for a maximum of 4x FCM modules
- ▶ Frame 19": 3U, approx. 194mm (D), for a maximum of 9x FCM modules

CODE	DESCRIPTION
27702000	19", 1U for max. 4x FCM m
27702026	19", 3U for max.9x FCM m
27702001	Cover plate

FIBERFOX FCM Module Connection Cables

- ▶ $\varnothing = 2.8\text{mm} \times 5.7\text{mm}$ - Figure 8, length see article description
- ▶ Plastic, flame-retardant, halogen-free
- ▶ Ready-made
- ▶ Colours assorted to 9/125, 50/125 and 62.5/125
- ▶ Top quality connector



CODE FOR INTEGRATION OF THE FCM MODULES IN ST SYSTEMS

27505327	2x SC APC8° / 2x ST, 9/125, yellow, 2m
27505114	2x SC-APC8° / 2x SC-APC 8°, 9/125, yellow, 2m
27505357	2x SC-APC8° / 2x SC-UPC,9/125, yellow, 2m

CODE FOR INTEGRATION OF THE FCM MODULES IN LC-DUPLEX SYSTEMS

27505331	2x SC APC8° / 2x LC PC, 9/125, yellow, 2m
----------	---

CODE FOR INTEGRATION OF THE FCM MODULES IN ST SYSTEMS

27505327	2x SC APC8° / 2x ST, 9/125, yellow, 2m
----------	--

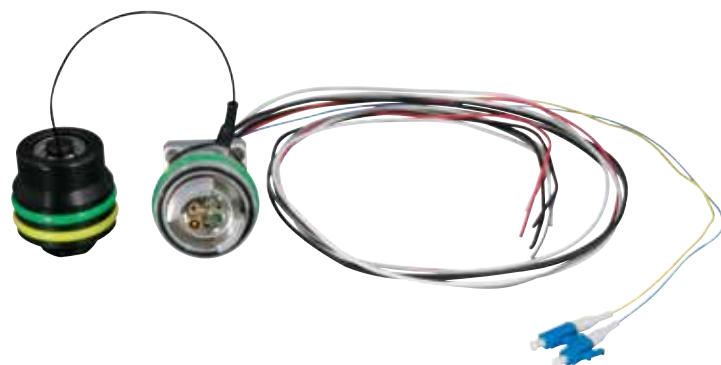
CODE FOR INTEGRATION OF THE FCM MODULES IN E2000 SYSTEMS

27505328	2x SC APC8° / 2x E2000, PC 9/125, yellow, 2m
27505329	2x SC APC8° / 2x E2000, APC8° 9/125, yellow, 2m

CODE FOR INTEGRATION OF THE FCM MODULES IN FC/PC SYSTEMS

27505330	2x SC APC8° / 2x FC / PC, 9/125, yellow, 2m
27505283	2x SC APC8° / 2x FC / APC 8°, 9/125, yellow, 2m

FIBERFOX EBC70 Ready-Made Receptacle SMPTE



- ▶ Dimensions without cables: (W) 30mm, (H) 30mm, connector = $\varnothing 5\text{mm}$ (D) 64.4mm with closed cap
- ▶ 2-fibers
- ▶ 2 pins for power, protected against touching
- ▶ 2 pins for control, protected from touching
- ▶ Guiding pin, ground first connection
- ▶ Three coding rings (red, yellow, green) included
- ▶ Ready made up, incl. safety cap
- ▶ Heavy-duty

CODE BASIS SINGLEMODE, SMPTE

27700074	1x EBC70 / 2x LC, 9/125, AWG cables, 2m
27700076	1x EBC70 / 2x LC APC8°, 9/125, AWG cables, 2m
27700078	1x EBC70 / 2x SC PC, 9/125, AWG cables, 2m
27700075	1x EBC70 / 2x SC UPC, 9/125, AWG cables, 2m
27700077	1x EBC70 / 2x SC APC 8°, 9/125, AWG cables, 2m

FIBERFOX PATCHCORDS READY-MADE (OUTDOOR)

FIBERFOX cable in the MIL design is always used to make up this cable. Thanks to its outstanding characteristics, outdoor use is possible even under difficult conditions. If EBC are not used, attention should be paid to ensuring adequate protection of the corresponding types being used.

FIBERFOX Ready-Made Cable Outdoor 2-Fibers



- ▶ ø = 5mm, length see article description
- ▶ PUR flame-retardant, halogen-free
- ▶ ready made, with cable divider 2-fibers
- ▶ Heavy-duty
- ▶ Low attenuation
- ▶ Low weight

FIBERFOX READY-MADE CABLE OUTDOOR 2-FIBERS
2X ST TO 2X ST

CODE	DESCRIPTION
	on request

FIBERFOX READY-MADE CABLE OUTDOOR 2-FIBERS
2X SC / 2X SC

CODE	DESCRIPTION
	on request

FIBERFOX READY-MADE CABLE OUTDOOR 2-FIBERS
2X LC / 2X LC

CODE	DESCRIPTION
	on request



More versions and different lengths on request!

FIBERFOX Ready-Made Cable Outdoor 4-Fibers



- ▶ ø = 5mm, length see article description
- ▶ PUR flame-retardant, halogen-free
- ▶ ready made, with cable divider 4-fibers
- ▶ Heavy-duty
- ▶ Low attenuation
- ▶ Low weight

FIBERFOX READY-MADE CABLE OUTDOOR 4-FIBERS
4X ST TO 4X ST

CODE	MULTIMODE 50/125µM
	on request

FIBERFOX READY-MADE CABLE OUTDOOR 4-FIBERS
4X ST TO 4X ST

CODE	MULTIMODE 62.5/125µM
	on request

FIBERFOX READY-MADE CABLE OUTDOOR 4-FIBERS
4X LC / 4X LC

CODE	MULTIMODE 50/125µM
	on request

FIBERFOX READY-MADE CABLE OUTDOOR 4-FIBERS
4X LC / 4X LC

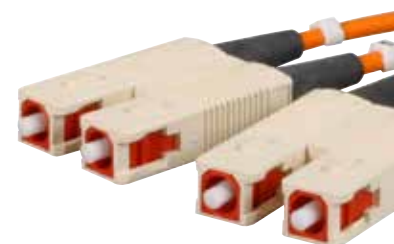
CODE	MULTIMODE 62.5/125µM
	on request

FIBERFOX READY-MADE CABLE OUTDOOR 4-FIBERS
4X SC / 4X SC

CODE	MULTIMODE 50/125µM
	on request

FIBERFOX READY-MADE CABLE OUTDOOR 4-FIBERS
4X SC / 4X SC

CODE	MULTIMODE 62.5/125µM
	on request



▶ ACCESSORIES

FIBERFOX ACCESSORIES

Apart from the specific FIBERFOX systems, we carry the corresponding accessories.

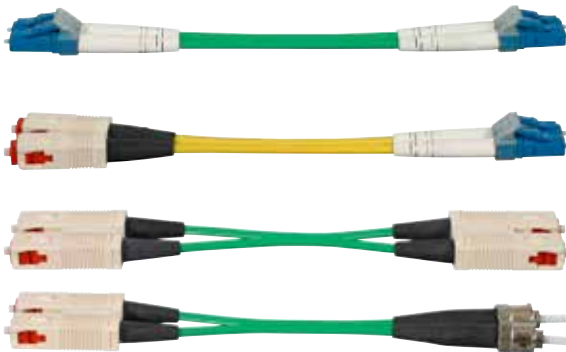
FIBERFOX Colour Coding Rings



- ▶ Made of rubber
- ▶ Available in white, green, blue, orange, yellow and red

CODE	Description
27480001	Color coding ring EBC15 white (10pcs pack)
27480002	Color coding ring EBC15 green (10pcs pack)
27480003	Color coding ring EBC15 blue (10pcs pack)
27480004	Color coding ring EBC15 orange (10pcs pack)
27480005	Color coding ring EBC15 yellow (10pcs pack)
27480006	Color coding ring EBC15 red (10pcs pack)

FIBERFOX Patchcord Indoor Duplex



- ▶ $\varnothing = 2,8\text{mm} \times 5,7\text{mm}$ - Figure 8, length see article description
- ▶ Plastic, flame-retardant, halogen-free
- ▶ Ready-made
- ▶ Colours sorted to 9/125, 50/125 and 62.5/125
- ▶ Top quality connectors
- ▶ Additional versions and different lengths on request!

FIBERFOX PATCHCORD INDOOR DUPLEX EXAMPLES

CODE	MULTIMODE LENGTH 2 METER
27505024	2X ST / 2X ST, 50/125, 2m
27505058	2X ST / 2x SC, 50/125, 2m
27505085	2x SC / 2x SC, 50/125, 2m
27505149	2x LC / 2x LC, 50/125, 2m
27505177	2x SC / 2x LC, 50/125, 2m

FIBERFOX PATCHCORD INDOOR DUPLEX EXAMPLES

CODE	SINGLEMODE LENGTH 2 METER
27505050	2X ST / 2X ST, 9/125, 2m
27505076	2X ST / 1X SC PC, 9/125, 2m
27505105	2X SC PC / 2X SC PC, 9/125, 2m
27505114	2X SC APC8° / 2X SC APC8°, 9/125, 2m
27505165	2x LC PC / 2x LC PC, 9/125, 2m
27505193	2X SC PC / 2x LC PC, 9/125, 2m

More versions and different lengths on request!

More versions and different lengths on request!

FIBERFOX Measuring Tools



CODE	DESCRIPTION
27009036	Microscope 400x with adapter 2,5mm
27009040	Universal adapter 1,25mm for microscope 27009036
27009064	Single-/multimode test kit (SMLP5-5)

FIBERFOX Spare Parts



CODE	DESCRIPTION
27008150	Protective Cap Set EBC5x Cap, Cord, Crimp ShrinkTu
27490001	Protective cap EBC15_P black
27490002	Protective Cap Set EBC15_C Cap, Cord, Crimp ShrinkTu
27490003	Rubber gasket EBC15_Px D shape black

FIBERFOX Connectors EBC1502, EBC1504

MODE	MULTIMODE	MULTIMODE	SINGLEMODE
Fibers (channels):	2	4	4
Expanded Beam:	yes	yes	yes
Insertion Loss @ 1300nm:	0,7dB typ.	0,7dB typ.	1,0dB typ.
Operating Temperature:	-40 up to +70°C	-40 up to +70°C	-40 up to +70°C
Storage Temperature:	-55 up to +85°C	-55 up to +85°C	-55 up to +85°C
Water Immersion:	> 2mtr (IP68)	> 2mtr (IP68)	> 2mtr (IP68)
Free Fall Resistance (on concrete):	500x from 1,2m heigth	500x from 1,2m heigth	500x from 1,2m heigth
Mating Cycles:	> 5000	> 5000	> 5000
Crush Resistance:	> 5 tons	> 5 tons	> 5 tons
Bump Resistance @ 40g:	> 4000 bumps	> 4000 bumps	> 4000 bumps
Tensile Load (depends on cable):	1500 N (typ.)	1500 N (typ.)	1500 N (typ.)
Flange dimensions Receptacle EBC5x:	(W) 37mm, (H) 37mm		
Dimensions Receptacle EBC5x:	(W) 37mm, (H) 37mm, (D) 82mm (with closed cap)		

FIBERFOX Connector EBC70

Optical Insertion Loss:	Typ -0.75dB, (Singlemode 9/125mm 1310nm)
Optical Return Loss:	>-45dB
Auxiliary Power Elec.:	600V ac 10A
Signal Elec.:	42V ac 1A 60V dc 1A
Auxiliary Power Contact resistance:	<4mW
Signal Elec. Contact resistance:	<5 mW
Operating Temperature:	-40°C to +85°C
Storage Temperature:	-55°C to +85°C
Tensile Load:	>1000N (Cable dependant)
Mating Cycles:	>5000
IP 67:	Environmental Seal rating
Crush Resistance:	>3000N - Free fall, 500 onto concrete from 1.2m

FIBERFOX Cable Outdoor MIL, Mechanical Data

Overall Diameter:	∅ = 5 mm (2 fibers), 5,5 mm (4 fibers)
Jacket Material:	PUR flame retardend, halogen-free
Jacket Colour:	Multimode: matt black, Singlemode: matt grey
Weight:	23 kg / km (2 fibers), 27 kg / km (4 fibers)
Tensile Load (Short-Term):	1800 N
Tensile Load (Long-Term):	600 N
Minimum Bend Radius (Installation):	50 mm IEC 794-1-E11, Singlemode: 88mm
Minimum Bend Radius (Operation):	25 mm IEC 794-1-E11, Singlemode: 44mm
Impact Resistance:	200 impacts (EIA-455-25A)
Crush Resistance:	440 N/cm (EIA-455-41A)
Storage Temperature:	-55 up to +85°C IEC 794-1-F1
Operating Temperature:	-46 up to +71°C IEC 794-1-F1
Bend Insensitivity:	Class A (ITU-T G.657) – for Singlemode only!

FIBERFOX Cable Outdoor MIL, Optical Data

TYPE OF CABLE	MULTIMODE	BANDWIDTH FOR 850NM	BANDWIDTH FOR 1300NM
27101004	2 x 62.5/125µm	200MHz/km	500MHz/km
27101022	2 x 50/125µm OM3	2000MHz/km	500MHz/km
27101005	4 x 62.5/125µm	200MHz/km	500MHz/km
27101023	4 x 50/125µm OM3	2000MHz/km	500MHz/km
Attenuation @ 850nm = 3dB/km			
Attenuation @ 1300nm = 1db/km			

TYPE OF CABLE	SINGLEMODE ULTRABEND	ATTENUATION FOR 1300NM	ATTENUATION FOR 1550NM
27101019	4 x 9/125µm	0,5dB/km	0,5dB/km

FIBERFOX Cable Indoor

Attenuation Multimode 50/125:	2,6dB / km typ., 2,8 / km max. for 850nm
Attenuation Multimode 62.5/125:	3,0dB / km typ., 3,2/ km max. for 850nm
Attenuation Singlemode 9/125:	0,35dB / km typ., 0,5 / km max. for 1310nm
Outer Dimenions:	∅ = 2,8 mm x 5,7mm
Jacket colour:	green (50/125), blue (62.5/125), yellow (9/125)
Weight:	7,1 kg / km
Tensile Load (Short-Term):	200 N
Minimum Bend Radius:	> 25mm for installation and operation
Storage Temperature:	- 30 up to + 70° C
Operating Temperature:	- 5 up to + 55° C
Characteristics:	halogen-free, flame-retardant

FIBERFOX[®]

The World Of Professional Fiber Optics

Manufactured under DIN EN ISO 9001

www.fiberfox.com

Your Dealer