

PASSIVE COLUMN LOUDSPEAKER RAY-ON 100

Acoustics meets Architecture

Directivity control

that ensures perfect intelligibility

Acoustic Comfort

thanks to a remarkably consistent sound coverage

Vertical Mounting

excellent architectural integration thanks to the DGRC principle



Ray-on 100 is a 1m high column loudspeaker that can be mounted vertically. Its acoustical performances are really close to DSP loudspeakers ones thanks to the DGRC principle (Digital and Geometric Radiation Control) patented by Active Audio. It offers a high quality sound for large places such as airports, train stations, conference rooms, churches, shopping malls, amusement parks, etc.

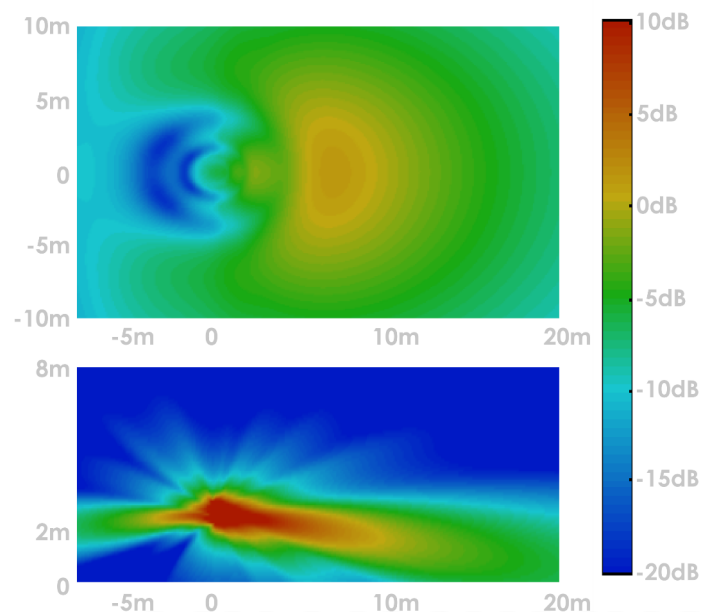
The Ray-On 100 was designed for sound reinforcement of speech and music. An easy and fast set up, without a PC, simply by wiring the column and its amplifier makes its installation simple, efficient, and sure.

Exists in 2 versions, low impedance and 100V.

Acoustical data



DGRC Principle



Abscissa: distance (m). Ray-On at 2,30m from ground. 0dB is the mean SPL over 3m-10m on axis. Octave band 2kHz.



ACOUSTICAL DATA	LOW IMPEDANCE		100V
Sensitivity 1W/8m (equivalent to 1W/1m)	71dB at 1W/8m (89dB/1W/1m)		
Continuous power (according to EN5424)	150W RMS 1000W peak	25W / 50W / 100W	
Amplifier power recommended	300W		
SPL max at 8m	93dB	85 / 88 / 91 dB	
SPL max equivalent 1m	111dB	103 / 106 / 109 dB	
Frequency response at -3dB / -10dB	150Hz - 16,5kHz / 120z - 19Hz		
Vertical directivity	Wavefront synthesis		
Range (500Hz-2kHz ± 3 dB)	15m		
Range (500Hz-2kHz ± 5 dB)	23m		
Horizontal opening angle 1kHz / 4kHz	±100° / ±70°		
Loudspeakers	12 loudspeakers 70x70mm tropicalized		

ELECTRICAL DATA	LOW IMPEDANCE	100V
Nominal impedance	8Ω	400 / 200 / 100 Ω
Loudspeaker connector	Ceramic terminal block screw, with "loop-through"	
Wire section	from 0,5 to 2,5mm²	
Protection	Thermal fuse and protection against overload	

MECHANICAL DATA	LOW IMPEDANCE		100V
Materials	Aluminum treated steel grid rustproof and UVproof		
Dimensions H x W x D (mm)	1026 x 128 x 117		
Weight (kg)	9	10	
Environment	IP54, from -25°C to 55°C		
Colors	White (RAL9016 repaintable) and Black (RAL9005)		
Mounting	Flush mounting		

TUNING AND EXPLOITATION			
Recommended equalization	7 parametric cells		
Modeling	EASE and CATT-Acoustic models available		

For details on measurement conditions, see manual

Mounting



The rigging system allows the column to stick very close to the wall, giving the impression that the column is part of the structure. Just a few minutes are needed to install it.