

#### Key features

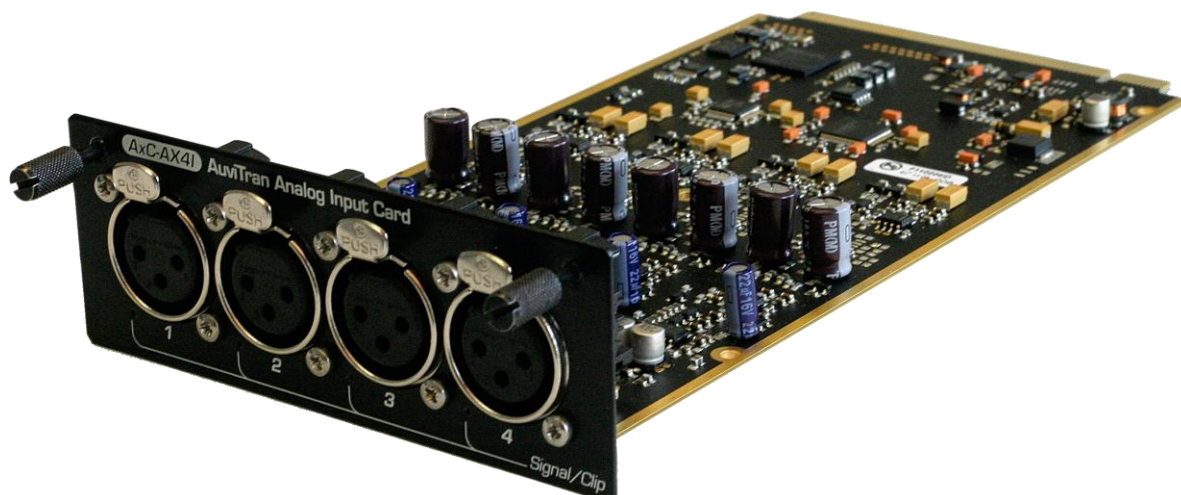
- Audio inputs interface card for the AuviTran Audio ToolBox platform
- Up to four analog balanced high quality inputs
  - Dynamic range > 110 dB
  - THD +N < -100 dB
- Professional XLR female connectors
- Remote management with ESMonitor software through the EtherSound Network.
- Dedicated control page for monitoring and controlling all the card parameters
- Individual gain control of each input

#### AuviTran Audio Toolbox in brief

AuviTran Audio ToolBox is a modular audio platform giving access to a large variety of professional audio networked configurations.

With a 1U rack chassis and different audio interface cards, you can build the configuration you need:

- EtherSound interface
- MADi interface
- Analog inputs or outputs XLR connectors
- Analog inputs/outputs Euroblock connectors
- Mic preamp inputs
- AES/EBU inputs/outputs
- GPI/GPO interface
- ....



#### Applications

- Product for fixed installation with high quality Audio distribution, paging and zone management:
  - ◆ Stadium, museum and arts centre
  - ◆ Opera, theatre dressing room
  - ◆ Theme parks and resorts
  - ◆ Public Address: fixed sound reinforcement
  - ◆ Bars, pubs, discos
  - ◆ Exhibition and conference Centres
  - ◆ Security, voice alarm system
  - ◆ Exhibition and conference Centres
- Product for Transportation public address
  - ◆ Train and bus stations terminals
  - ◆ Airport facilities and audio distribution
  - ◆ Cruise Ships including onboard entertainment
  - ◆ Paging system for music and announcements

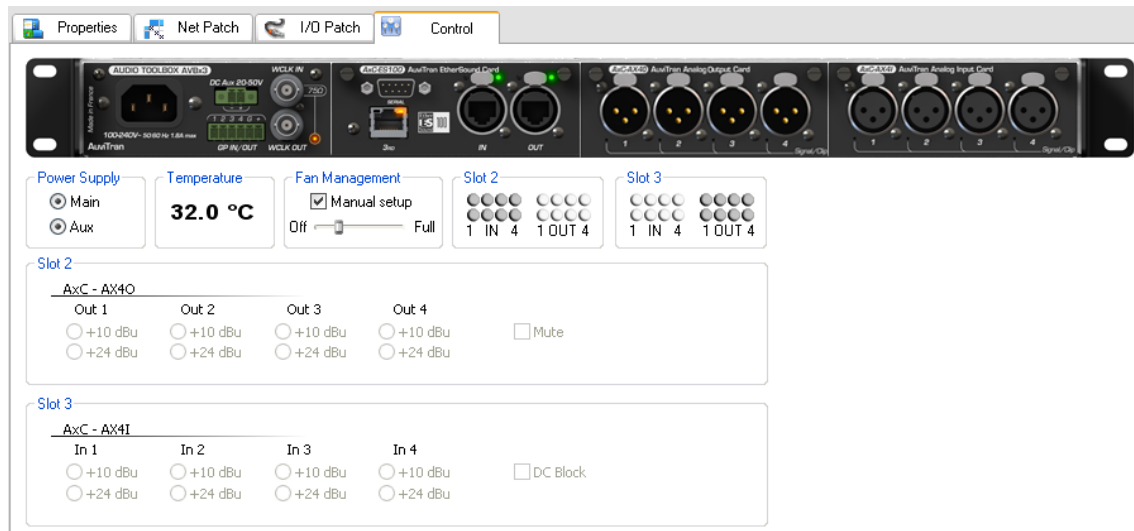
#### Mechanical Specifications

200 x 100 x 40 mm

AuviTran Audio ToolBox platform format



Audio Distribution over Standard Ethernet: EtherSound™ enhances established technologies to provide easy-to-implement, high-quality audio networks. The patented EtherSound™ protocol provides fully deterministic, very low-latency (125µs plus 1.4µs per additional network node) transmission of synchronized audio channels over standard Ethernet. EtherSound™ provides a cost effective fully digital path between a virtually infinite number of networked audio devices with up to 128 channels of 24-bit digital audio at 48 KHz, with bi-directional status and control data. Off-the-shelf Ethernet components such as 100baseTX switch can be used to extend the number of audio devices, as well as the distance between the devices on the network.



Preliminary version, subject to change

## Technical Specifications

General	
Size	200 mm x 100 mm x 40 mm – Format AuviTran Audio ToolBox platform cards
Power Supply	+12V / +3.3V - Through AuviTran Audio ToolBox backplane
Storage: Temp/Humidity	- 5°C to 70°C / 0% to 95% (non-condensing)
Operating: Temp/Humidity	0 °C to 50°C / 5% to 90% (non-condensing)
Connectors	4 x female XLR connectors
Audio Inputs	
Number of i/o	Up to 4 analog inputs routed through the AuviTran Audio ToolBox backplane to the other cards
Audio Inputs Specifications	
Sampling Frequency	44.1 kHz / 48 kHz
A/D resolution	24 bits
Frequency response	20Hz – 20kHz (-0.4dB / +0.0dB)
Dynamic Range (BW 22KHz)	> 110 dB (UnWeighted)
THD+N (1KHz / BW 22KHz)	< -100 dB
Input Specification	Balanced analog, +24dBu / +10dBu sensibility (digitally controlled) for full scale, 10kΩ Input Impedance (differential)
Integration Environment	
Audio ToolBox platform	AxC-A4XI is one the cards for the AuviTran Audio ToolBox platform
AVS-ESMonitor	AVS-ESMonitor enables to remotely set, control and monitor an EtherSound network and provides enhanced control pages to manage the AxC-A4XI card specific parameters.
OS Supported	Windows Seven/Vista/XP for 32 or 64 bit versions

## Part number

AxC-AX4I      AuviTran Audio ToolBox card with 4 analog inputs (XLR connectors)