



**GlenSound**  
Keeps Working

## DANTE in/out Interfaces



Dante in/out Interfaces  
Edition 2022-12





# Glensound

Keeps Working

Glensound designs and builds the highest quality audio systems for the broadcast, touring and commercial audio markets.

As the broadcast market is very important for Glensound, their product designs are intended to be rugged and reliable, to withstand the rigours of the outside broadcast world. Special manufacturing techniques are used to reduce damage from typical mis-handling.

Glensound will continually strive to design the best audio solutions for broadcasters and commercial integration, looking for original solutions and not following the crowd.

Glensound was founded in 1966 in the UK, when Len Davis invented the world's first telephone balancing unit for use on BBC Radio's first phone in programme.

Contact:

ZAP SA

Im Hölzli 26

8405 Winterthur

Tel: 052 232 37 80

zapde@zapaudio.com

www.zapaudio.com

Specifications & Prices are subject to change without notice !

[www.glensound.co.uk](http://www.glensound.co.uk)



## AOIP-22

**Robust mobile 2 channel bidirectional Dante audio interface.** The AOIP22 is designed to easily interface existing analogue equipment to a Dante/AES67 network. Being powered by PoE means that only one cable needs to be connected.



- 2x XLR analogue audio inputs
- 2x XLR analogue audio outputs
- Neutrik EtherCon connector
- DANTE / AES67 network, control & configuration
- PoE powered or 12 VDC
- cable tie mounting points
- robust aluminium housing
- 153x105x41mm (WxDxH), 420 g

## AOIP-22 AES

**Robust mobile AES3 DANTE interface.** The AOIP22 AES3 is designed to easily interface existing AES3 equipment to a Dante/AES67 network. Being powered by PoE means that only one cable needs to be connected.



- 1x AES3 in, 1x AES3 out (stereo)
- DANTE / AES67 network, control & configuration
- sample rate converters on inputs to synchronise the incoming AES3 stream to the Dante/AES67 clock rate
- AES3 outputs are synchronised to the network audio sample rate and as such their clocks follow the Dante/AES67 circuits
- transformer balanced AES3 inputs
- PoE powered or 12 VDC
- cable tie mounting points
- robust aluminium housing
- 153x105x41mm (WxDxH), 405 g



## Line I/O &amp; AES DANTE interfaces (Ultimo chipset)

## AOIP-22u

**Robust mobile 2 channel bidirectional Dante audio interface.** The AOIP22u is designed to easily interface existing analogue equipment to a Dante/AES67 network. Being powered by PoE means that only one cable needs to be connected.



- 2x RCA unbal. analogue audio inputs
- 2x RCA unbal. analogue audio outputs
- adjustable input gain control per channel
- Neutrik EtherCon network connector
- DANTE / AES67 network, control & configuration
- PoE powered or 12 VDC
- cable tie mounting points
- robust aluminium housing
- 153x105x41mm (WxDxH), 420 g



## AOIP-4i

**Robust mobile 4 channel inputs Dante audio interface.** This device uses Audinate's Ultimo chipset which can receive 4 incoming audio channels (from a maximum of 2 network locations (2 different devices)).



- 4x XLR analogue audio inputs
- DANTE / AES67 network, control & configuration
- PoE powered or 12VDC
- if both PoE 802.3af & DC power are connected then power supply is automatically redundant
- fully protected electronically balanced circuits
- cable tie mounting points
- robust aluminium housing
- 153x105x41mm (WxDxH), 420 g

## AOIP-4o

**Robust mobile 4 channel outputs Dante audio interface.** This device uses Audinate's Ultimo chipset which can receive 4 incoming audio channels (from a maximum of 2 network locations (2 different devices)).



- 4x XLR analogue audio outputs
- DANTE / AES67 network, control & configuration
- PoE powered or DC 12V
- if both PoE 802.3af & DC power are connected then power supply is automatically redundant
- cable tie mounting points
- robust aluminium housing
- 153x105x41mm (WxDxH), 420 g





## AOIP-44

**Dante audio interface 4 inputs, 4 outputs.** This device uses Audinate's Ultimo chipset which can receive 4 incoming audio channels (from a maximum of 2 network locations (2 different devices)).



- 4x balanced audio inputs to Dante/AES67
- 4x balanced audio outputs from the network
- 19" rack 1 U, 123mm deep, 1.2kg
- high quality audio circuits (for broadcast)
- can be PoE powered
- DC power option
- mains IEC 100-240VAC
- front or rear rack-mounting possible

## AOIP-44 AES

**Robust mobile AES3 DANTE interface.** The AOIP44 AES3 is designed to easily interface existing AES3 equipment to a Dante/AES67 network. Being powered by PoE means that only one cable needs to be connected. (incoming audio channels from a maximum of 2 network locations - 2 different devices !)



- 2x AES3 in, 2x AES3 out
- DANTE / AES67 network, control & configuration
- sample rate converters on inputs to synchronise the incoming AES3 stream to the Dante/AES67 clock rate
- AES3 outputs are synchronised to the network audio sample rate and as such their clocks follow the Dante/AES67 circuits
- transformer balanced AES3 inputs
- PoE powered or 12 VDC
- cable tie mounting points
- robust aluminium housing
- 153x105x41mm (WxDxH), 420 g



## Line I/O &amp; AES DANTE interfaces (Brooklyn II)

## DARK 8 O

**Portable 8 channel outputs Dante interface.** It provides 8 analogue outputs from a Dante / AES67 network and has redundant RJ45 & SFP fiber slots, powered by PoE or external DC.



- 8x analogue audio outputs
- Dante/AES67 compatible
- redundant network interface
- 2x Neutrik EtherCon & 2x GBIC SFP slots
- PoE powered or 12 VDC
- cable tie mounting points
- robust aluminium housing
- 59x157x238mm (HxDxW), 1.2 kg

## DARK 8 ADI

**8 channel analogue & 4x AES3 inputs Dante interface.** It has 8 low noise line inputs and 4 transformer balanced AES3 digital inputs. These inputs are transmitted on a fully redundant Dante/AES67 network interface.



- 8x analogue line level inputs
- 4x AES3 inputs, transformer balanced
- Dante/AES67 compliant
- auto switching outputs between AES & analogue
- redundant network connection
- AES3 inputs with sample rate converters
- redundant power supplies
- network & power status GPO's
- mains 100-240VAC
- 19" 1 RU unit, 300mm deep, 3kg

## DARK 88 MK2

**8 inputs & 8 outputs Dante interface.** It provides a 8-in/8-out high quality analogue audio interface to a Dante/AES67 network. For highest reliability, both network connections (RJ45 & fiber) and also the power supplies are redundant.

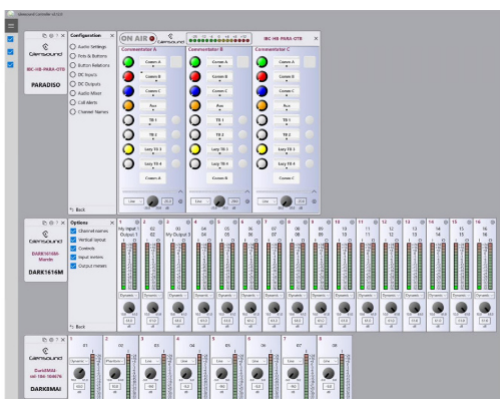


- 8x balanced audio inputs to Dante/AES67
- 8x balanced audio outputs from the network
- Dante / AES67 compliant
- redundant RJ45 and fiber connections
- connection to Dante network for control & configuration
- up to 192 kHz sampling
- GPO status outputs on the front
- twin redundant power supply
- mains IEC 100-240VAC, 12VDC power option
- 442x303x44mm (WxDxH), 1U rack, 3 kg

## GlenController - Software

The GlenController Windows 10/11 software is provided free of charge to add network remote control and setup to the range of networked Dante/AES67 products. GlenController automatically finds all compatible devices that it can control on your network and shows them in a list on the left hand side of the screen - it is possible to password protect devices to prevent unauthorised access. All compatible devices can connect to multiple GlenControllers simultaneously, meaning that several operators in your workflow can access a device and see its levels, gains etc. at the same time.

GlenController has built-in redundancy. It connects to the devices that it is controlling by both the primary and secondary interfaces (if available) and, like Dante audio network, it provides seamless backup if one of the two networks should fail.



### Compatible products:

Paradiso, Dark1616M, Dark1616S, Dark8MAI, Dark8MAIR, Styx, BEA-B4+, Divine, Comedia, Spark, Vita Mini-X, GTM





## Line I/O & AES DANTE interfaces (Brooklyn II)

### DARK 16i

**16 analogue inputs DANTE interface.** It provides 16 high quality analogue audio inputs to a Dante/AES67 network. For highest reliability, both network connections (RJ45 & fiber) and also the power supplies are redundant.



- 16x analogue audio inputs on rear panel XLR
- Dante/AES67 compliant
- redundant RJ45 and fiber connections (SFP)
- connection to Dante network for control & configuration
- low noise ADC's
- up to 192 kHz sampling
- GPO status outputs on the front
- redundant mains power supplies
- 19" 1RU 300mm deep, 2.8 kg

### DARK 16o

**16 analogue outputs DANTE interface.** It provides 16 high quality analogue audio outputs from a Dante/AES67 network. For highest reliability, both network connections (RJ45 & fiber) and also the power supplies are redundant.



- 16x analogue audio outputs on rear panel XLR
- Dante/AES67 compliant
- redundant RJ45 and fiber connections (SFP)
- connection to Dante network for control & configuration
- low noise DAC's
- up to 192 kHz sampling
- GPO status outputs on the front
- redundant mains power supplies
- 19" 1RU 300mm deep, 2.8 kg



## Line I/O & AES DANTE interfaces (Brooklyn II)

### DARK 1616

**16 analogue in/out & 8 AES3 in/out Dante interface.** It is a versatile break in/out box for sending / receiving both analogue and digital (AES3) audio to/from a Dante audio network. In total there are 16 channels of audio sent from the Dark1616 to the network (AES3 inputs take priority !)



- 8 AES3 inputs & 8 AES3 audio outputs
- 16 analogue audio inputs & 16 outputs
- max. 16 channels of audio to the network !
- redundant RJ45 and fiber connections
- connection to Dante/AES67 network for control & configuration
- AES3 inputs with sample rate converters
- AES3 outputs are locked to sample frequency of the Dante network
- network link status GPO's
- redundant mains power supplies
- 19" 1RU 300mm deep, 3.3 kg

### DARK 1616D

**8x AES3 inputs & 8x AES3 outputs DANTE interface.** It is a digital converter designed to connect AES3 audio circuits to/from Dante / AES67 audio network.



- 8 AES3 inputs & 8 AES3 audio outputs
- Dante / AES67 compatible
- redundant RJ45 and fiber connections
- connection to Dante/AES67 network for control & configuration
- SubD25 connectors for AES3 (Tascam standard)
- network link status GPO's
- redundant mains power supplies
- 19" 1RU 300mm deep, 3.3 kg



## Microphone - DANTE interfaces (Ultimo chipset)

### AOIP-2M

**Robust mobile 2 channel microphone Dante interface.** The AOIP2M is packaged in a small and rugged case for outside broadcast, theatre and touring applications. It has 2 microphone inputs with 48V phantom power and gain control and it is PoE powered.



- 2x XLR mic-line inputs
- selectable 48V
- AES67 compliant
- Neutrik EtherCon connector
- independent gain controls
- PoE powered & 12VDC
- cable tie mounting points
- robust aluminium housing
- 153x105x41mm (WxDxH), 420 g

### DARK 8MAI MK2 (Brooklyn II)

**Robust mobile 8 channel microphone inputs Dante interface.** The DARK8MAI MK2 is a very powerful microphone to Dante interface in a robust aluminium case. It has 8 low noise mic-line inputs which are remotely controlled by Windows 10 app.



- 8x XLR mic inputs with low noise mic amps
- 48V phantom power
- AES67 compliant
- 2x EtherCon copper and 2x fiber network interface (SFP optional)
- redundant network interfaces
- PoE powered (redundant on the two RJ45)
- 12VDC when no PoE available
- remote control via Windows 10 app
- robust aluminium housing
- 238x157x59mm (WxDxH), 1.2 kg

## Microphone - DANTE interfaces (Brooklyn II)

### DARK 8 MAIR

**8 channel microphone Dante interface.** The DARK8MAIR is a very powerful Dante/AES67 network interface, in a robust 19" rack-housing. It has 8 low noise mic-line inputs which are remotely controlled by a Windows 10 App. The outputs of the microphone amplifiers are transmitted to a fully redundant Dante network.



- 8x XLR mic inputs with low noise mic amps
- 48V phantom power
- AES67 compliant
- 2x EtherCon copper and 2x fiber network interface (SFP optional)
- redundant network interfaces
- PoE powered (redundant on the two RJ45)
- redundant IEC mains 100-240 V
- remote control via Windows 10 app
- 19" 1RU 185mm deep, 1.9 kg

### DARK 1616M

**16 channel mic-line in/out & 8 channel AES3 in/out Dante interface.** The DARK 1616M is an audio interface that provides connections for 16 mic/line inputs & outputs plus 8x AES3 inputs & outputs to a Dante/AES67 network.



- 16x analogue mic-line inputs & 16x outputs
- 8x AES3 inputs (with sample rate converters) & 8x AES3 outputs
- 16 network remote controllable mic amps
- analogue & digital outputs are always available, inputs work either on AES input priority or can be selected in the Windows App.
- redundant network links, both copper & fiber
- redundant power supplies
- Windows 10 app for remote control
- mains IEC 100-240V
- 19" 1RU 300mm deep, 3.3 kg

Kontaktieren Sie uns für eine Vorführung oder detaillierte Auskünfte:

ZAP SA  
Im Hölderli 26  
8405 Winterthur  
Tel: 052 232 37 80  
zapde@zapaudio.com  
www.zapaudio.com

Specifications are subject to change without notice !

[www.glen sound.co.uk](http://www.glen sound.co.uk)