

LuminEX
NETWORK INTELLIGENCE

ICONS PRODUCT'S FUNCTIONS / SUPPORT

In this catalog you'll find these icons, which show each product's functions and supported data protocols.



Streaming ACN | Official standard protocol for DMX over IP network (ANSI E1.31).



BACKUP | Secure your system with a redundant link, source, power supply, fan...



CONVERTER | Convert from/to Ethernet and DMX.



GROUPS | See detailed description on page 24.



MONITOR | Monitor your whole network and devices.



ART-NET™ | Open lighting protocol standard developed by Artistic Licence.



CONTROL | Take control of your lighting fixtures.



DMX 512-A | 2004 revision for DMX protocol (ANSI E1.11 Standard).



MERGER | Merge a minimum of two DMX or Ethernet universes.



MultilinkX | Protocol to aggregate several links into one virtual one. Available in a future firmware release.



Power Over Ethernet | Provide both power and data over the same network cable.



REROUTE | Converge one or several universes into a new one.



RlinkX | See detailed description on page 20.



SPLITTER | Repeat your DMX signal over several ports of the same device.



TRIGGER | Remote selection of a lighting control source, through a Luminex converter.



RDM | Remote Device Management: protocol for remote management of a lighting fixture (ANSI E1.20).



RING | Network topology where network devices are connected in a ring. Meant to provide link redundancy.



SNAPSHOT | Capture a fixed lighting state you can recall later.

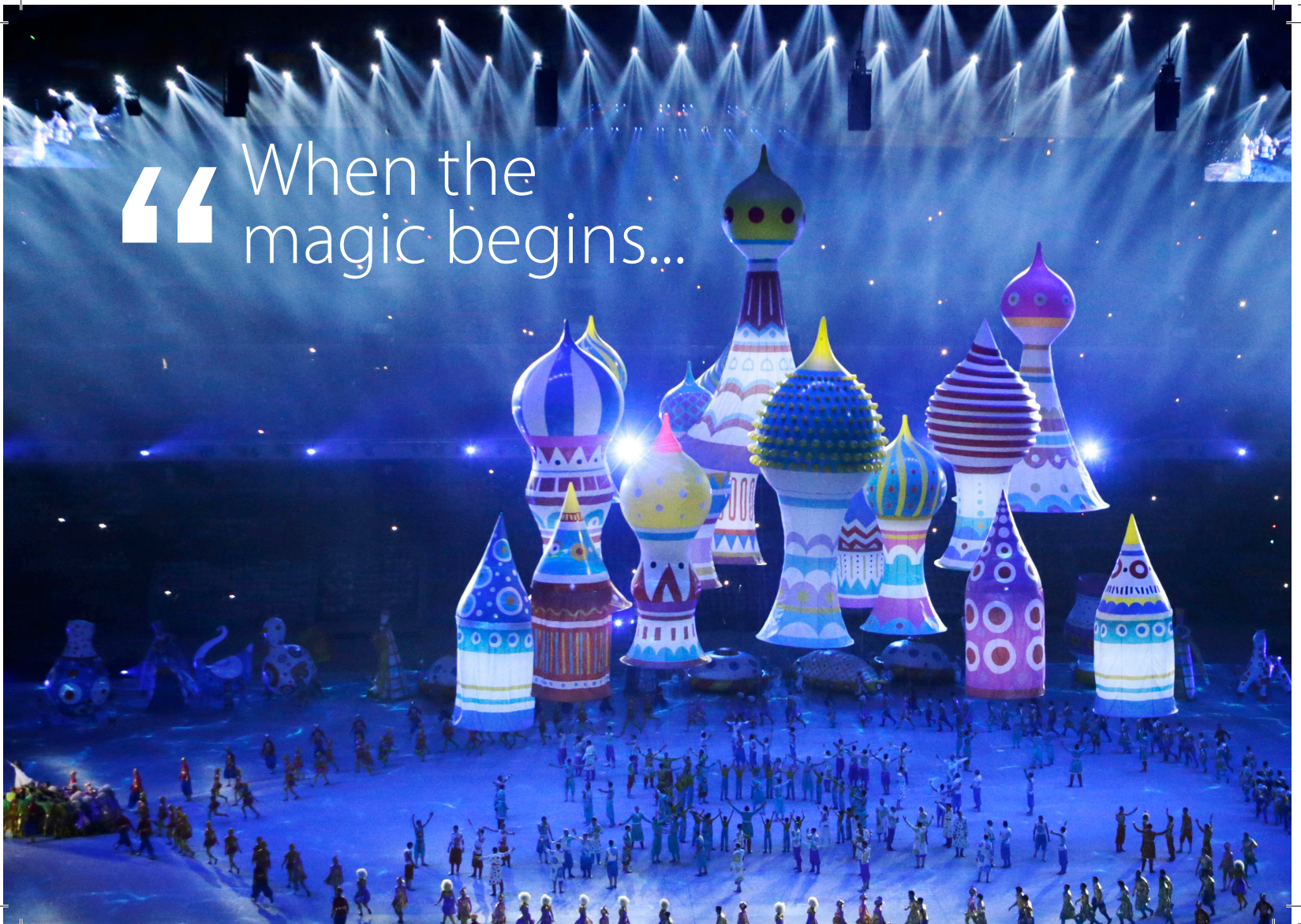


SWITCH | Networking device that connects devices together on a network, for them to communicate.



WEB Interface | Device equipped with a web interface.

“When the
magic begins...”





CONTENTS

5

DMX/RDM SPLITTERS	6
• LumiSplit 2.10	7
• LumiSplit 1.6	8
• DMX512-A 2.10 HUB (Ethercon)	9
ETHERNET-DMX CONVERTERS	10
• Ethernet - DMX2 Truss MkII	11
• Ethernet - DMX2 Wall MkII	12
• Ethernet - DinMX4	13
• Ethernet - DMX4 MkII	16
• Ethernet - DMX4 Truss MkII	17
• Ethernet - DMX8 MkII	18
• Ethernet - DMX8 Truss MkII	19
ETHERNET SWITCHES	20
• GigaCore 10	21
• GigaCore 12	24
• GigaCore 14R	25
• GigaCore 16Xt	27
• GigaCore 16RFO	29
• GigaCore 26i	31
• GigaCore RPSU	33
SOFTWARE	34
• LumiNet Monitor V2	34

SPLITTERS^{DMX/RDM}

LumiSplit is a range of two DMX/RDM splitters, that come in a 2.10 and a 1.6 version. They are very robust DMX splitters that run the latest technology to be used with RDM bidirectional standard and fully backward compatible with DMX512 (1986/1990). LumiSplit enables you to manage and configure all your devices from one central place through RDM. The units all have individual isolated inputs and outputs

with self healing technology to protect your connected equipments against faulty connections, line voltages and short circuits. In addition to the LumiSplit range, the DMX512-A 2.10 HUB (Ethercon) provides the perfect alternative for fixed installations using only RJ45 connectors to transfer DMX signals.



LUMISPLIT 2.10

7

The LumiSplit 2.10 is the flagship of our DMX/RDM splitter range and is the result of ten years of experience with Remote Device Management. This rack-mounted device covers all features of the LumiSplit family and will give you a whole new perspective on Remote Device Management. Because the new boosters are now visible and configurable from any RDM controller, they enable technicians to organize and configure their lighting devices like never before. Users can also easily merge, back

up, and regenerate their DMX sources directly from the splitter. Every LumiSplit model comes with RGB LEDs for a better status indication. The RDM filter per zone (A/B) or per port prevents lighting fixtures from being flooded by undesired RDM packets. Designed with a robust housing with galvanic and optical isolation per outlet, and Neutrik PowerCON TRUE1 connector, LumiSplit is sure to become a favorite for touring and live events.



Features

- Smart DMX/RDM splitter
- Rack-mounted flagship of the LumiSplit range
- Two rear and front inputs (Zone A&B), can be used as thru connection
- 10 outputs with zone selection (A&B)
- RGB LED per port for a better mode indication and user experience
- Terminated inputs and outputs
- Visible through RDM
- Configurable through RDM and front panel
- RDM filter per input and output
- Different modes available (Splitter, backup, merger, re-generator...)
- Two user profiles available
- Optical and galvanic isolation per port
- Outlet error indication
- Neutrik powerCON TRUE1 input and output
- Also available in a 1.6 truss/rack version (no mode selection)



LUMISPLIT 1.6

LumiSplit also comes in a 1.6 version, the perfect addition to the LumiSplit range when it comes to truss-mounting applications (this device can be rack mounted as well). It has the same functionalities

as LumiSplit 2.10 (except for A/B zone selection, merging mode and backup mode). Instead of a second input, LumiSplit 1.6 offers you a thru connection to daisy chain multiple splitters.



(Mounting brackets included)



(Truss clamp NOT included)

Features

- Smart DMX/RDM splitter
- Truss or rack mounted (mounting ears included)
- One front input and a thru connection
- 6 outputs
- RGB LED per port for a better mode indication
- Terminated inputs and outputs
- Visible through RDM
- Configurable through RDM and front panel
- RDM filter per output
- Two user profiles available
- Optical and galvanic isolation per port
- Outlet error indication
- Neutrik powerCON TRUE1 input and output



DMX 512-A 2.10 HUB (ETHERCON)

9

The DMX 512-A 2.10 hub is the alternative splitter for the LumiSplit 2.10 with Ethercon connectors (2 inputs and 10 configurable outputs). The unit has 2 input connectors on the front and at the rear, making the unit

ideal for inside rack cabling as well. This device offers Neutrik Ethercon connectors, perfect for system integrations that are often being installed with RJ45 connectors only.



Features

- 2 rear and front inputs, terminated
- 10 configurable outputs, each routable to DMX line 1 or 2, terminated
- Neutrik Ethercon connectors (compliant with RJ45)
- Supported: DMX512 (1986 & 1990), ANSI E1.11 (DMX512-A) and ANSI E1.20 (RDM)
- Individual outlet protection on in- and output
- 1000 Volts optical isolation barrier
- Short circuit protection to protect against incorrect wiring
- Line voltage protection
- Each outlet can resist up to 530 VAC on its data pair (optical and galvanic isolation)
- Built in UPS ensures complete operation for 30 min at full load
- Universal power supply (90 - 260 V)



CONVERTORS

Cutting-edge DMX network routing designed for small to large scale events. These network nodes provide the most extensive routing, patching and merging for DMX distribution. Coupled with one of the most powerful hardware platform available on the market, these network nodes provides the most flexible and reliable solution so far.



ETHERNET DMX2 TRUSS MKII

11

The Ethernet - DMX2 / Truss MkII has been designed to fulfill the need of a small, rugged and efficient converter. Fitted in a robust enclosure, the Ethernet-DMX2 / Truss MkII offers all the great functionalities of the Ethernet-DMX engine. The unit is powered through a Neutrik Powercon

connector, but can also be powered through Power over Ethernet (PoE). Thanks to its versatile design, the unit can be used either in desktop or truss mounted applications.

Features

- 2 x bi-directional DMX connector (Input / Output)
- 2 x 10/100BaseTX Ethernet port
- Optic and galvanic isolated outputs.
- Shielded connectors
- The unit can be powered either through PoE (802.3af) or mains (create a backup for your power source)
- Easy multi language web interface
- M10 insert for truss mounting - holes for wall mounting
- Supported protocols: Art-Net I II III, DMX 512, RDM (E1.20), sACN (E1.31), RTTrP-L (BlackTrax)

Functions

- Converter (Ethernet<>DMX, Ethernet<>Ethernet)
- DMX Splitter, Ethernet & DMX merger
- RDM Gateway
- DMX trigger (remote selection of the control source, fade between sources) - Soft patch
- DMX snapshot - Snapshot playback
- Synced outputs



ETHERNET DMX2 WALL MK II

The Ethernet - DMX2 Wall MkII is a redesigned version of our popular Truss mount model. We felt the need for a practical wall mounted version dedicated to be integrated in power distribution boxes and other installations. The unit is powered through a Neutrik Powercon,

but can also be powered through Power over Ethernet (PoE). The unit offers all the same features as the other products from the Ethernet-DMX converter range.

Features

- 2 x bi-directional DMX connector (Input / Output)
- 2 x 10/100BaseTX Ethernet port
- Optic and galvanic isolated outputs.
- Shielded connectors
- The unit can be powered either through PoE (802.3af) or mains (create a backup for your power source)
- Easy multi language web interface
- M10 insert for truss mounting - holes for wall mounting
- Supported protocols: Art-Net I II III, DMX 512, RDM (E1.20), sACN (E1.31), RTrP-L (BlackTrax)

Functions

- Converter (Ethernet<>DMX, Ethernet<>Ethernet)
- DMX Splitter, Ethernet & DMX merger
- RDM Gateway
- DMX trigger (remote selection of the control source, fade between sources) - Soft patch
- DMX snapshot - Snapshot playback
- Synced outputs



ETHERNET DINMX4

13

The Ethernet - DinMX4 is the DIN rail edition of the Ethernet-DMX4 MkII converter. The unit offers four DMX ports and two Ethernet ports for an easy network connection. The four DMX connections are available through terminal blocks (RJ45 as an option). Art-Net, sACN and RDM

protocols are available. All these features make this product ideal for architectural and fixed installations.

Features

- 4 x bi-directional DMX connector (Input / Output)
- 2 x 10/100BaseTX Ethernet port
- Optic and galvanic isolated outputs.
- Shielded connectors (RJ45 only)
- The unit can be powered either through PoE (802.3af) or mains (create a backup for your power source)
- Easy multi language web interface
- Supported protocols: Art-Net I II III, DMX 512, RDM (E1.20), sACN (E1.31), RTrP-L (BlackTrax)

Functions

- Converter (Ethernet<>DMX, Ethernet<>Ethernet)
- DMX Splitter, Ethernet & DMX merger
- RDM Gateway
- DMX trigger (remote selection of the control source, fade between sources) - Soft patch
- DMX snapshot - Snapshot playback
- Synced outputs



“Creativity is the
power to connect





Luminex
NETWORK INTELLIGENCE

ETHERNET DMX4 MKII

The Ethernet - DMX4 MkII is the perfect step between Ethernet-DMX2 MkII and Ethernet-DMX8 MkII. The unit serves 4 shielded DMX connectors, that can be used as input or output*. The unit offers also two Ethernet ports (front and rear) for an easy network connection, and

a graphical display for a better settings visualization. The unit will ideally fit into rack for users wishing to get 4 universes wherever they need.



* Different port configurations available (at the rear of the unit)

Features

- 4 x bi-directional DMX connector (Input / Output)
- 2 x 10/100BaseTX Ethernet port
- Optic and galvanic isolated outputs.
- Shielded connectors
- Front end display for quick configuration
- Easy multi language web interface
- Supported protocols: Art-Net I II III, DMX 512, RDM (E1.20), sACN (E1.31), RTrP-L (BlackTrax)
- Optional PoE support

Functions

- Converter (Ethernet<>DMX, Ethernet<>Ethernet)
- DMX Splitter, Ethernet & DMX merger
- RDM Gateway
- DMX trigger (remote selection of the control source, fade between sources) - Soft patch
- DMX snapshot - Snapshot playback
- Synced outputs



ETHERNET DMX4 TRUSS MKII

17

The Ethernet - DMX4 / Truss MkII is the "Truss" edition of the Ethernet - DMX4 MkII. Equipped with one M10 insert for truss mounting, and fitted with a rugged enclosure that allows to use the device for wall or truss mounted applications. The unit serves 2 Ethercon connectors for an easy network connection. The Ethernet DMX4 Truss MkII is the perfect bridge for middle size installations or tours.



Features

- 4 x bi-directional DMX connector (Input / Output)
- 2 x 10/100BaseTX Ethernet port
- Optic and galvanic isolated outputs.
- Shielded connectors
- Front end display for quick configuration
- The unit can be powered either through PoE (802.3af) or mains (create a backup for your power source)
- Easy multi language web interface
- M10 insert for truss mounting - holes for wall mounting
- Supported protocols: Art-Net I II III, DMX 512, RDM (E1.20), sACN (E1.31), RTrP-L (BlackTrax)

Functions

- Converter (Ethernet<>DMX, Ethernet<>Ethernet)
- DMX Splitter, Ethernet & DMX merger - RDM Gateway
- DMX trigger (remote selection of the control source, fade between sources) - Soft patch
- DMX snapshot - Snapshot playback
- Synced outputs



ETHERNET DMX8 MKII

The Ethernet - DMX8 MkII is the 8 ports edition of the Ethernet-DMX converter range. The unit serves 8 shielded DMX outlets, that can be used as input or output*. The unit offers also two Ethernet ports (front and rear) for an easy network connection, and a graphical display for a

better settings visualization. This unit is the ideal companion for high demanding lighting show, where channel count requires lots of DMX outputs.



* Different port configurations available (at the rear of the unit)



Features

- 8 x bi-directional DMX connector (Input / Output)
- 2 x 10/100BaseTX Ethernet port
- Optic and galvanic isolated outputs.
- Shielded connectors
- Front end display for quick configuration
- Easy multi language web interface
- Supported protocols: Art-Net I II III, DMX 512, RDM (E1.20), sACN (E1.31), RTrP-L (BlackTrax)
- Optional PoE support

Functions

- Converter (Ethernet<>DMX, Ethernet<>Ethernet)
- DMX Splitter, Ethernet & DMX merger
- RDM Gateway
- DMX trigger (remote selection of the control source, fade between sources) - Soft patch
- DMX snapshot - Snapshot playback
- Synced outputs



ETHERNET DMX8 TRUSS MKII

19

The Ethernet-DMX8 / Truss MkII is the truss mounted version of the Ethernet-DMX8 MkII. Fitted with a rugged enclosure, the unit offers two M10 inserts for easy truss mounted application, and a display for quick configuration. This rock solid form factor makes the Ethernet-DMX8 / Truss MkII the perfect tool for versatile productions and installations.



Features

- 8 x bi-directional DMX connector (Input / Output)
- 2 x 10/100BaseTX Ethernet port
- Optic and galvanic isolated outputs.
- Shielded connectors
- Front end display for quick configuration
- The unit can be powered either through PoE (802.3af) or mains (create a backup for your power source)
- Easy multi language web interface
- 2 x M10 insert for truss mounting - holes for wall mounting
- Supported protocols: Art-Net I II III, DMX 512, RDM (E1.20), sACN (E1.31), RTTrP-L (BlackTrax)

Functions

- Converter (Ethernet<>DMX, Ethernet<>Ethernet)
- DMX Splitter, Ethernet & DMX merger - RDM Gateway
- DMX trigger (remote selection of the control source, fade between sources) - Soft patch
- DMX snapshot - Snapshot playback
- Synced outputs



NETWORK SWITCHES

LUMINEX switches provide an excellent solution for expanding your network. The very user-friendly interface and the ruggedized Ethercon connectors make it ideal for the entertainment industry, delivering exceptional performance, quality, and reliability.

The GigaCore switches are tailored to support protocols such as: AES67, ArtNet, Dante™, Ethersound, MANet 1&2, Q-LAN, REAC™, sACN and many more...



GIGACORE¹⁰

21

By far the most versatile Luminex Gigabit switch to be built to date, the plug and play GigaCore 10 has been designed specifically for the challenges and rigours of the live events and touring industry, where effortless set up, flexible use options, compact size and rugged reliability are key. The half 19" unit with front and rear connectivity is designed to

be mounted in a truss, in a rack or even on a wall. The robust metal enclosure and rugged Ethercon and (optional) Fiber connectors make this unit excel in truss mounted applications with Ethernet enabled devices, such as moving lights, PA systems, microphones, cameras or general stage connectivity.



Features

- Wire-speed Layer 2/3 managed switch
- Industry specific web interface
- 8 x Gigabit Ethercon port
- 4 slots rugged Fiber connectors f (Neutrik OpticalCon or Fiberfox)
- RGB LEDs for the device: group status, PoE, RLinkX, Power, Link/Speed
- Group : See description on page 24
- RLinkX : See description on page 28
- 1 x fan
- Universal power supply 100 - 240V



- Tailored for industry protocols, such as : AES67, ArtNet, Dante™, Ethersound, MANet 1&2, Q-LAN, REAC™, sACN and many more...
- Profile manager
- IEEE 1588 PTP V2

Options

- PoE supply unit: Deliver up to 150W through the 8 Ethercon connectors





#AVNetworkingMadeEasy



GIGACORE¹²

The GigaCore 12 is a managed Gigabit Ethernet switch designed to cope with the most demanding lighting and AV installations, but in a truly user friendly way. The unit offers 12 Gigabit ports on shielded Neutrik

Ethercon ports, making the product a hard environment friendly device. All configurations are done through the industry oriented web interface.



Features

- Wire-speed Layer 2/3 managed switch
- Industry specific web interface
- 12 x Gigabit Ethercon port
- 3 LEDs per port: PoE, RLinkX, Link/Speed
- 4 status LEDs for the device: OK, PoE, RLinkX, Power
- Group : See description on page 24
- RLinkX : See description on page 28
- 1 x fan
- Universal power supply 100 - 240V

- Tailored for industry protocols, such as : AES67, ArtNet, Dante™, Ethersound, MANet 1&2, Q-LAN, REAC™, sACN and many more...
- Profile manager
- IEEE 1588 PTP V2

Options

- PoE supply unit: Deliver up to 150W through the 10 front Ethercon connectors



GIGACORE 14R

GigaCore
ETHERNET SWITCHES

25

The GigaCore 14R is a Gigabit Ethernet switch designed to cope with the most demanding lighting and AV installations. Managed through a web interface, the device offers a user friendly experience with an industry specific oriented interface. Fitted with two SFP cages, the switch can support any compliant fiber transceiver, breaking the limit of copper cable run. Two power backup ports at the rear of the unit makes the switch a reliable Gigabit core for your network. The GigaCore 14R comes

with a bunch of industry oriented feature, providing a user friendly solution and lowering down set-up time.



Features

- Wire-speed Layer 2/3 managed switch
- Industry specific web interface
- 12 x Gigabit Ethercon port
- 2 x Gigabit compliant SFP cages
- 3 LEDs per port: PoE, RLinkX, Link/Speed
- 4 status LEDs for the device: OK, PoE, RLinkX, Power
- Group : See description on page 24
- RLinkX : See description on page 28
- Redundant fans

- Tailored for industry protocols, such as : AES67, ArtNet, Dante™, Ethersound, MANet 1&2, Q-LAN, REAC™, sACN and many more...
- Profile manager
- IEEE 1588 PTP V2

Options

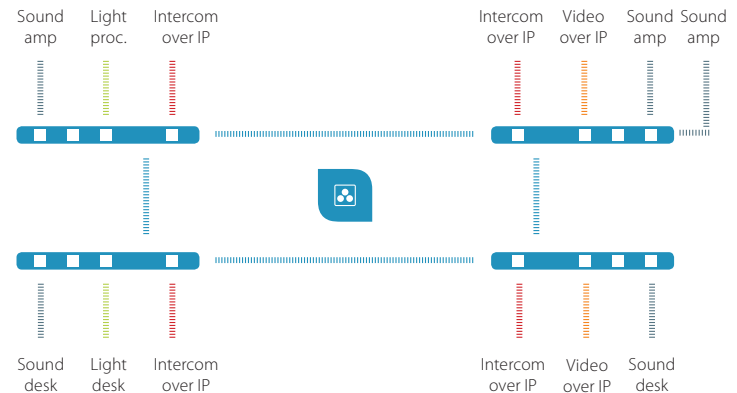
- PoE supply unit: Deliver up to 150W through the 10 front Ethercon connectors
- Redundant Power and PoE Supply (See RPSU page 28)



GROUPS

The Luminex GigaCore switches offer user to isolate devices from each other. As an example, user can isolate audio over IP data from light over IP data. This avoids devices to be flooded by unrequested data,

especially for broadcasted protocols such as ArtNet. This results in a better traffic shaping, and network performances.



Through the very user friendly web interface, or through the front panel display (16Xt and RFO models only), the user can assign ports into specific groups.

The GigaCore switches offer up to 20 groups, each of them represented by a specific colour. In this case, only ports assigned with the same colour can communicate together (red talks to red, green talks to green, and so on).

GIGACORE 16XT

GigaCore
ETHERNET SWITCHES

27

The GigaCore 16XT is a Gigabit Ethernet switch designed to cope with the most demanding lighting and AV installations. Managed through an intuitive web interface, the unit can also be configured from the front end display, making this switch an hassle-free solution for every day job.



Features

- Wire-speed Layer 2/3 managed switch
- Industry specific web interface
- 12 x Gigabit Ethercon port
- 4 x Gigabit compliant SFP cages
- Front end display for basic configuration
- 3 LEDs per port: PoE, RLinkX, Link/Speed
- 4 status LEDs for the device: OK, PoE, RLinkX, Power
- Group : See description on page 24
- RLinkX : See description on page 28
- Redundant fans

Four SFP cages also offer users to create complex network topologies over fiber link, such as mesh or ring. Additional available options makes the GigaCore 16XT one of the most secured system of the industry.



- Tailored for industry protocols, such as : AES67, ArtNet, Dante™, Ethersound, MANet 1&2, Q-LAN, REAC™, sACN and many more...
- Profile manager
- IEEE 1588 PTP V2

Options

- PoE supply unit: Deliver up to 150W through the 10 front Ethercon connectors
- Redundant Power and PoE Supply (See RPSU page 28)





GIGACORE 16RFO

GigaCore
ETHERNET SWITCHES

29

The GigaCore 16RFO is a unit designed without compromises, specifically with touring application in mind and with the feedback of key industry players. The unit comes with all the advanced functionalities of the GigaCore Ethernet switches range, in a fully touring oriented package. The 2U high unit offers rugged optical connectors options such as

OpticalCon, settable at the front or the rear of the unit, making a very flexible solution. Full backup on power supply is available, bringing true redundancy at power level. Front end display, rugged connectors, and the easiest managed switch interface available on the market, make this product the ideal companion for a stressless tour !



Features

- Wire-speed Layer 2/3 managed switch
- Industry specific web interface
- 12 x Gigabit Ethercon port
- 4 x Gigabit compliant SFP cages
- Front end display for basic configuration
- 3 LEDs per port: PoE, RLinkX, Link/Speed
- 4 status LEDs for the device: OK, PoE, RLinkX, Power
- 4 slots at the front and the rear for D-Type connectors such as Neutrik OpticalCon or Fiberfox
- Group : See description on page 24
- RLinkX : See description on page 28
- Redundant power supply

- Redundant fans
- Tailored for industry protocols, such as : AES67, ArtNet, Dante™, Ethersound, MANet 1&2, Q-LAN, REAC™, sACN and many more...
- Profile manager
- IEEE 1588 PTP V2

Options

- PoE supply with redundant supply to deliver up to 150W through the 10 front Ethercon connectors



RLINKX

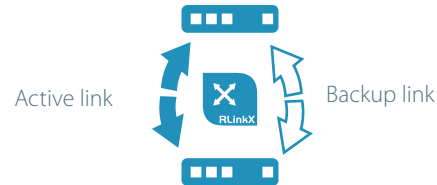
The GigaCore managed switches comes by default with RLinkX enabled on every Ethernet port.

RlinkX stands for Redundant Link by LumineX. This redundancy protocol, based on Rapid Spanning Tree, is tailored to offer users a true transparent and hassle free recovery system in case of link failure.

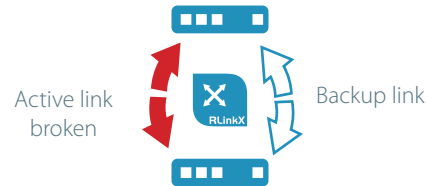
User simply needs to connect two or more GigaCore switches together, to create redundant link(s), no configuration required. In the unlikely event of a link failure, switches will automatically activate the backup link(s).

This will result in a seamless data flow within the network, providing user a true peace of mind, even in worst case scenario.

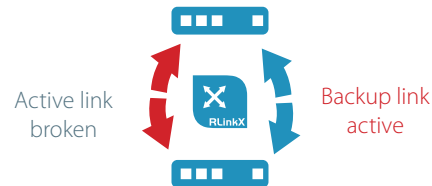
Step 1



Step 2



Step 2



GIGACORE²⁶ⁱ

GigaCore
ETHERNET SWITCHES

31

The GigaCore 26i is a Gigabit Ethernet switch providing a budget friendly solution when port density matters. The unit comes with all the advanced functionalities of the GigaCore Ethernet switches range, in a fully AV-installation oriented package. The unit offers 26 Gigabit ports that are all connected on the front panel. Each port on the switch will have coloured mode led indications which will indicate different

properties of the port such as: PoE, redundancy and group membership. Configuration can be done through an intuitive web interface. The complete GigaCore range is validated for different pro audio and lighting protocols by different key manufacturers and referred as the preferred network solution. This makes the GigaCore 26i the ideal solution to create a complete network in Studios, theaters, convention centers...



Features

- Wire-speed Layer 2/3 managed switch
- Industry specific web interface
- 24 x Gigabit copper ports on RJ45
- 4 x Gigabit compliant shared SFP cages
- 2 additional Gigabit compliant SFP cages
- 4 status LEDs for the device: OK, PoE, RLinkX, Power
- Coloured Mode LED per port: PoE, redundancy and group membership
- Additional LED per port: Link/Speed
- Group : See description on page 24
- RLinkX : See description on page 28
- Redundant fans



- Tailored for industry protocols, such as: AES67, ArtNet, Dante™, Ethersound™, MANet 1&2, Q-LAN, REAC™, sACN, and many more...
- Profile Manager
- IEEE 1588 PTP V2

Options

- PoE+ supply unit: Deliver up to 350W through the 20 front RJ45 connectors
- Redundant Power and PoE supply



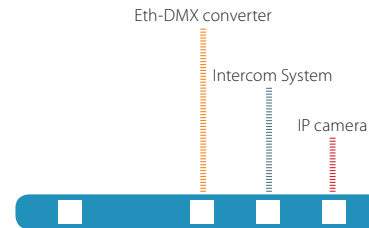
PoE - PoE+

PoE allows the user to pass electrical power and data through Ethernet cabling. For example to provide data connection and power to devices such as Ethernet-DMX converters, intercom systems, IP cameras...



All Luminex switches have optional PoE+ and can deliver up to 150 Watts. Our GigaCore 26i comes with a total Power over Ethernet budget of 350 Watts through 24 front connectors.

All Luminex Ethernet-DMX Truss converters come with standard PoE input meaning it can be powered by a PoE switch.



GIGACORE^{RPSU}

33

The GigaCore RPSU is the answer in term of power redundancy for the GigaCore 14R and 16Xt switches. Fitted in a 19" enclosure, the unit can monitor two GigaCore switches at the same time. In the unlikely event one of the switches' power supply fails, the GigaCore RPSU will provide backup power to one unit at a time, seamlessly. Not only the GigaCore

RPSU can secure the power input of the GigaCore switch, it can also backup the optional Power over Ethernet supply of the switch. This means user can be assured PoE devices connected to a GigaCore switch, to always receive power through their network cable.



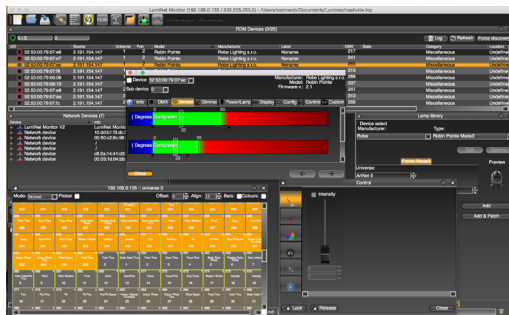
Features

- Monitor two GigaCore switches at a time
- Provide backup power to one switch at a time
- Provide backup power over Ethernet to one switch at a time
- 4 status LEDs for the device: PoE1, PoE2, PSU1, PSU2
- Status of the RPSU available through the GigaCore switch web interface
- 2 x Molex Micro-Fit 6 pin connector for redundant PSU
- 2 x Molex Micro-Fit 6 pin connector for redundant PoE supply
- Controlled fan
- Universal power supply: 100-240VAC
- Profile manager

LUMINET MONITOR V2

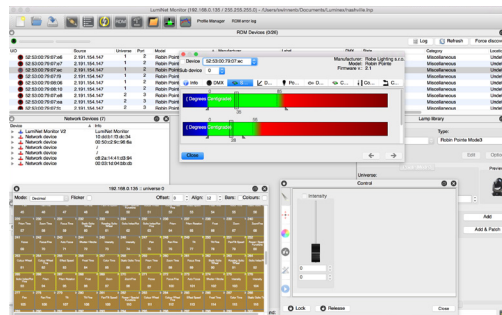
Free network management software from Luminex. All the necessary tools to manage, set up , and troubleshoot your Luminex network. Configure the

interface at your convenience thanks to the user friendly widgets. Get at a glance, all the information you need.



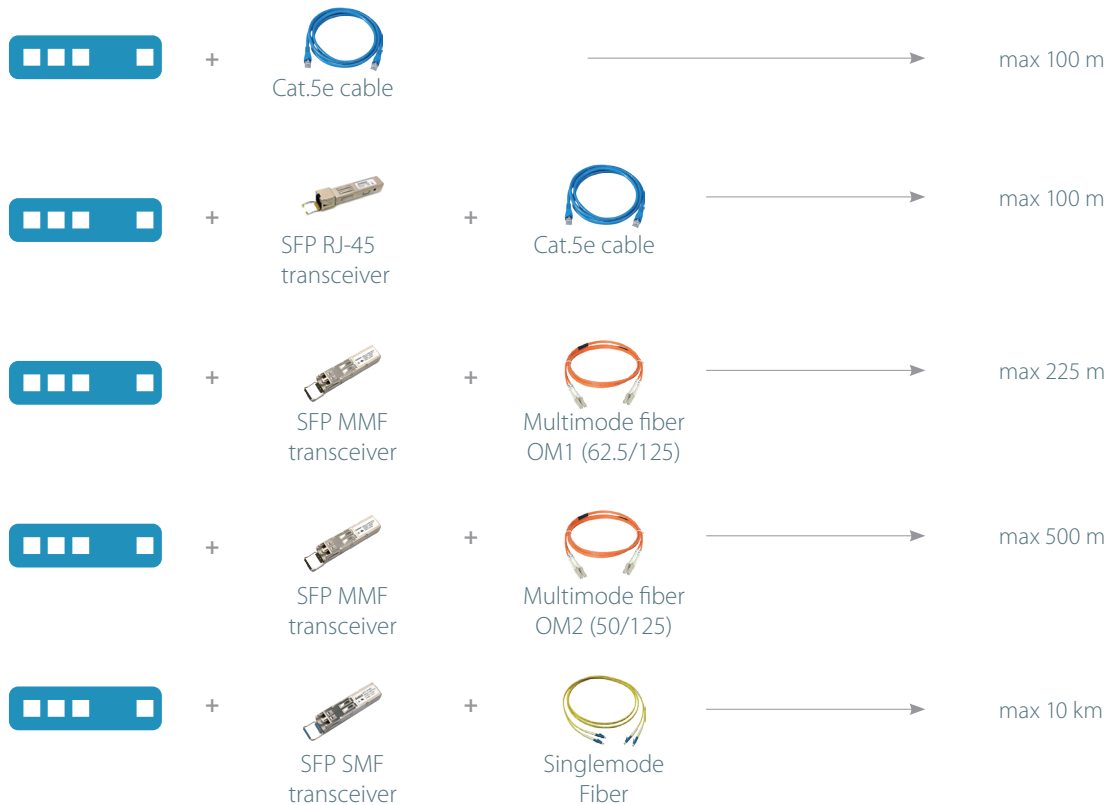
Features

- Luminex device overview
- Art-Net universe / DMX monitor
- Art-Net devices browser
- Art-Net generator
- Art-Net Log
- Fixture takeover (priority control of any lighting fixture)
- RDM : Visual commissioning.
 - Sensor alarm values.
 - Get/set of basic PIDs and custom PIDs.
 - Monitoring online status and queried messages
- Night & Day views
- Available for Mac® and Windows®



INFO TRANSCEIVERS & COVERAGE

35





Slamstraat 13
3600 Genk
Belgium

T +32 11 812 189
info@luminex.be
www.luminex.be